

CD26 MAB (BEGELOMAB)

Cat.#: 28146

Product Name: Anti-CD26 (Begelomab) Monoclonal Antibody

Synonyms: ADABP;ADCP2;CD26;DPPIV;TP103

Description: Anti-CD26 (begelomab) Monoclonal Antibody

Background: Research grade biosimilar. Not for use in therapeutic or diagnostic procedures for humans or animals.

Applications: Flow Cyt

Recommended Dilutions: Flow Cyt 1:100

Host Species: Mus musculus

Isotype: IgG2b

Purification: Purified from cell culture supernatant by affinity chromatography

Species Reactivity: Human CD26

Constituents: Lyophilized from sterile PBS, pH 7.4. 5 % – 8% trehalose is added as protectants before lyophilization.

Storage & Shipping: Store at -20°C to -80°C for 12 months in lyophilized form. After reconstitution, if not intended for use within a month, aliquot and store at -80°C (Avoid repeated freezing and thawing).

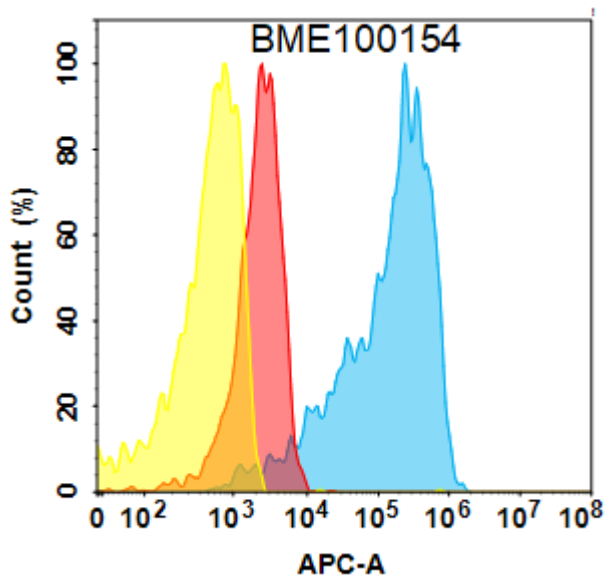


Figure 1. CD26 protein is highly expressed on the surface of Expi293 cell membrane. Flow cytometry analysis with 1 μ g/mL Anti-CD26 (begelomab biosimilar) mAb (28146) on Expi293 cells transfected with Human CD26 protein (Blue histogram) or Expi293 transfected with irrelevant protein (Red histogram), and Isotype antibody on Expi293 transfected with irrelevant protein (Orange histogram)