

BMP3 MAB**BMP3 Monoclonal****Cat. #:** 26051**Gene Symbol:** BMP3**Description:** Anti-BMP3 Mouse Monoclonal Antibody**Background:** BMP3 belongs to the TGF-beta family. It negatively regulates bone density and antagonizes the ability of certain osteogenic BMPs to induce osteoprogenitor differentiation and ossification. BMP3 is secreted and highly expressed in fracture tissue, particularly in osteoblasts, osteoclasts and chondroblasts.**Immunogen:** A synthetic peptide near the N-terminus of BMP3, human origin.**Applications:** ELISA, WB, IHC, IP**Recommended Dilutions:**

ELISA: 1:1000–1:5000

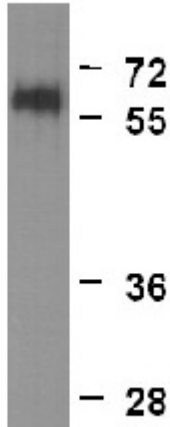
WB: 1:1000–1:5000

IHC: 1:50–1:100

Concentration: 1 mg/ml**Host Species:** Mouse**Format:** Liquid**Clonality:** Monoclonal**Isotype:** IgG**Purity:** Purified from ascites**Preservative:** No**Constituents:** PBS (without Mg^{2+} and Ca^{2+}), pH 7.4, 150 mM NaCl, 50% glycerol**Species Reactivity:** Anti-BMP3 antibody recognizes BMP3 of vertebrates.**Storage Conditions:** Store at $-20^{\circ}C$. Avoid repeated freezing and thawing

Western blot:

BMP3 protein



WB: Anti-BMP3 mAb

Western blot analysis of recombinant BMP3 protein.

Purified His-tagged BMP3 protein (Cat. #10194) was blotted with anti BMP3 monoclonal antibody (Cat. #26051).