

B-RAF MAB

BRaf Antibody

Cat. #: 26129

Size: 100 µL

Gene Symbol: B-Raf

Description: Anti-B-RAF Mouse Monoclonal Antibody

Background: B-Raf belongs to the TKL Ser/Thr protein kinase family, RAF subfamily. It is involved in the transduction of mitogenic signals from the cell membrane to the nucleus, and may play a role in the postsynaptic responses of hippocampal neuron. B-Raf is located to nucleus and cytoplasm, and expressed in brain and testis. Immunogen: A synthetic peptide from the internal region of B-Raf, human origin.

Immunogen: A synthetic peptide from the internal region of Braf (V600K), human origin.

Applications: ELISA, WB, IHC

Recommended Dilutions:

ELISA 1:1000–1:5000

WB 1:100–1:1000

IHC 1:50–1:100

Concentration: 1 mg/ml

Host Species: Mouse

Format: Liquid

Clonality: Monoclonal

Isotype: IgG

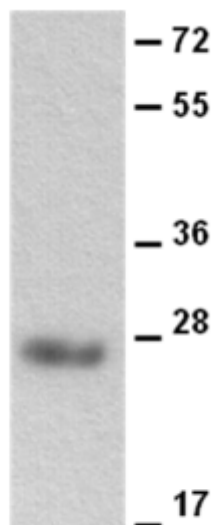
Purity: Purified from ascites

Preservative: No

Constituents: PBS (without Mg^{2+} and Ca^{2+}), pH 7.4, 150 mM NaCl, 50% glycerol

Species Reactivity: Anti-B-Raf antibody recognizes B-Raf of vertebrates.

Storage Conditions: Store at $-20^{\circ}C$. Avoid repeated freezing and thawing



WB: anti-B-Raf mAb

Western blot:

Western blot analysis of recombinant B-Raf protein.

Purified His-tagged B-Raf protein (Cat. #10161) was blotted with anti-B-Raf monoclonal antibody (Cat. #26129).