

BRAF(V600K)**BRAF(V600K)****Cat. #:** 26110**Size:** 100 µL**Gene Symbol:** BRAF, BRAF1, RAFB1**Description:** Anti-BRaf(V600K) Mouse Monoclonal Antibody

Background: B-Raf is a member of the Raf family of Ser/Thr protein kinases. It functions downstream of Ras to regulate the MAP kinase signaling pathway. Mutations in the BRAF gene cause diseases. Inherited mutations in BRAF cause cardiofaciocutaneous syndrome. Acquired mutations in BRAF have been found in cancers.

Immunogen: A synthetic peptide from the internal region of Braf (V600K), human origin.

Applications: ELISA, WB, IF, IHC

Recommended Dilutions:

ELISA 1:1000–1:5000

WB 1:500–1:2000

IHC 1:100–1:200

Concentration: 1 mg/ml

Host Species: Mouse

Format: Liquid

Clonality: Monoclonal

Isotype: IgG

Purity: Purified from ascites

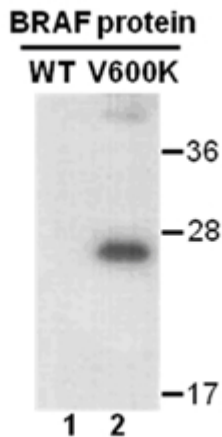
Preservative: No

Constituents: PBS (without Mg^{2+} and Ca^{2+}), pH 7.4, 150 mM NaCl, 50% glycerol

Species Reactivity: Recognizes B-Raf V600K, but not wild type B-Raf proteins from vertebrates.

Storage Conditions: Store at $-20^{\circ}C$. Avoid repeated freezing and thawing

Western blot:



WB: Anti-B-Raf (V600K) mAb

Western blot analysis of recombinant B-raf proteins. Purified His-tagged BRaf(V600K) protein (amino acids 513–693, lane 2) and corresponding wild type protein (lane 1) were blotted with Anti-BRaf(V600K) monoclonal antibody (Cat. # 26110).