

BRAF(D594G)

BRAF(D594G)

Cat. #: 26200

Gene Symbol: BRAF, BRAF1, RAFB1

Description: Anti-BRAF(D594G) Mouse Monoclonal Antibody

Background: BRAF belongs to a family of serine-threonine protein kinases. As a part of a signaling pathway known as the the RAS/MAPK pathway, it plays an important part in many cellular processes. The processes include cell proliferation, differentiation and transcriptional regulation. Mutations in the BRAF gene cause diseases. Inherited mutations in BRAF cause cardiofaciocutaneous syndrome. Acquired mutations in BRAF have been found in cancers.

Immunogen: A synthetic peptide from the internal region of BRAF which includes the mutation of D594G, human origin.

Applications: ELISA, WB

Recommended Dilutions:

ELISA: 1:1000-1:5000

WB: 1:500-1:1000

Concentration: 1 mg/ml

Host Species: Mouse

Format: Liquid

Clonality: Monoclonal

Isotype:

Purity: Purified from ascites

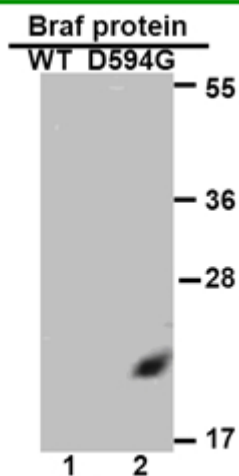
Preservative: No

Constituents: PBS (without Mg²⁺ and Ca²⁺), pH 7.4, 150 mM NaCl, 50% glycerol

Species Reactivity: Recognizes D594G mutant, but not wild type BRAF of vertebrates.

Storage Conditions: Store at -20°C. Avoid repeated freezing and thawing

Western blot:



WB: anti-Braf (D594G) mAb

Western blot analysis of recombinant BRAF(D594G) and wild type proteins.

Purified His-tagged BRAF(D594G) protein (lane 2) and corresponding wild type protein (lane 1) were blotted with Anti-BRAF(D594G) monoclonal antibody (Cat. # 26200).