

BRAF(V600A)**BRAF(V600A)****Cat. #:** 26199**Gene Symbol:** BRAF, BRAF1, RAFB1**Description:** Anti-BRAF(V600A) Mouse Monoclonal Antibody

Background: BRAF belongs to a family of serine-threonine protein kinases. As a part of a signaling pathway known as the the RAS/MAPK pathway, it plays an important part in many cellular processes. The processes include cell proliferation, differentiation and transcriptional regulation. Mutations in the BRAF gene cause diseases. Inherited mutations in BRAF cause cardiofaciocutaneous syndrome. Acquired mutations in BRAF have been found in cancers.

Immunogen: A synthetic peptide from the internal region of BRAF which includes the mutation of V600A, human origin.

Applications: ELISA, WB, IHC**Recommended Dilutions:**

ELISA: 1:1000–1:5000

WB: 1:500–1:1000

IF: 1:50–1:100

IHC: 1:25–1:100

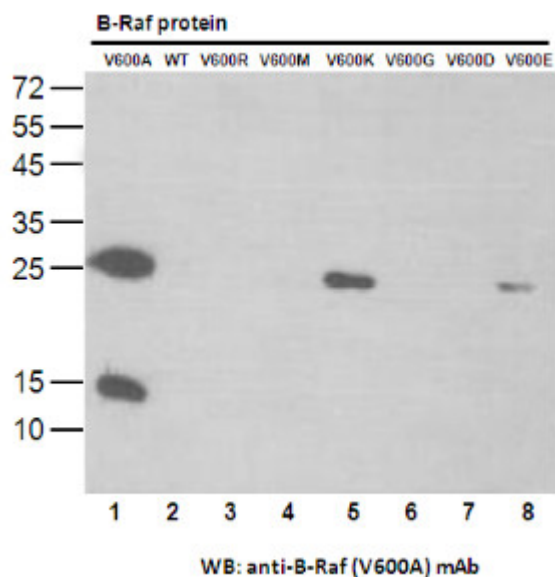
Concentration: 1 mg/ml**Host Species:** Mouse**Format:** Liquid**Clonality:** Monoclonal**Isotype:****Purity:** Purified from ascites**Preservative:** No

Constituents: PBS (without Mg²⁺ and Ca²⁺), pH 7.4, 150 mM NaCl, 50% glycerol

Species Reactivity: Recognizes V600A mutant, but not wild type BRAF of vertebrates.

Storage Conditions: Store at –20°C. Avoid repeated freezing and thawing

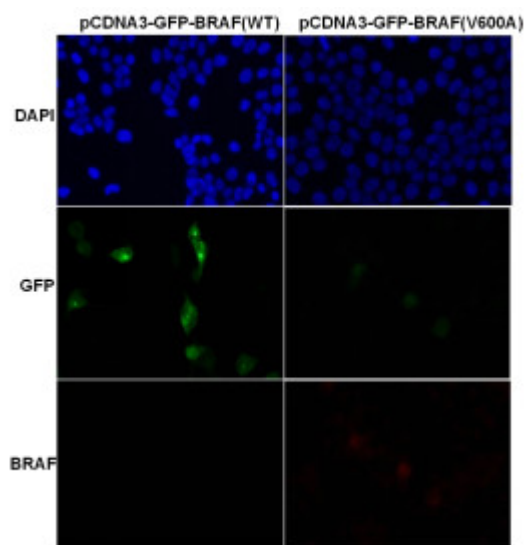
Western blot:

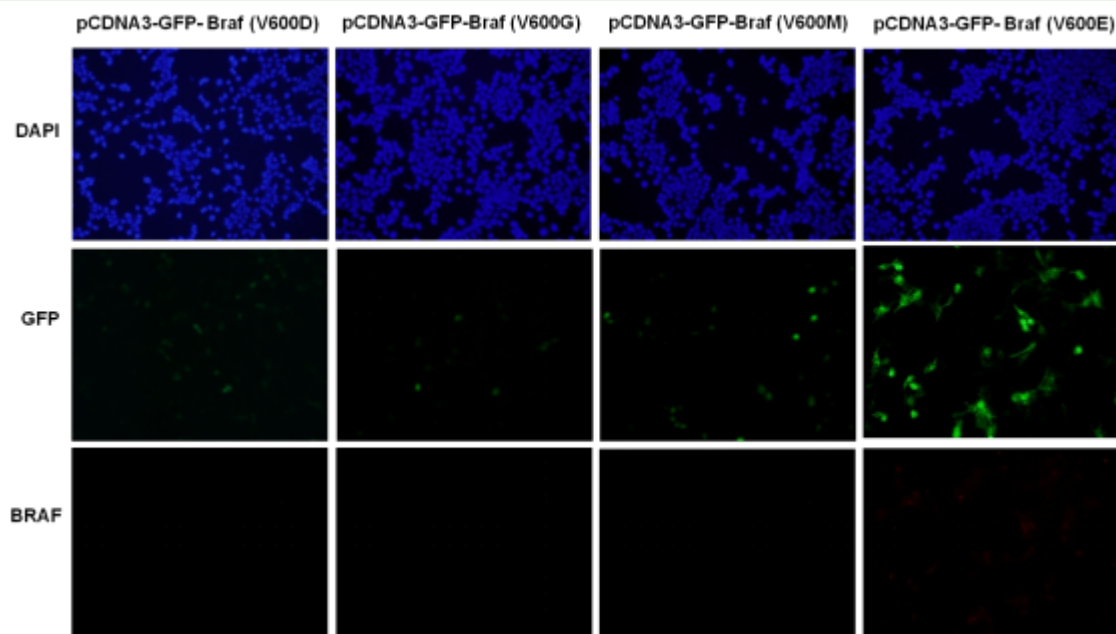


Western blot analysis of recombinant BRAF proteins.

Purified His-tagged BRAF(V600A) protein (lane 1), corresponding wild type protein (lane 2), His-tagged BRAF (V600R) protein (lane 3), His-tagged BRAF (V600M) protein (lane 4), His-tagged BRAF (V600K) protein (lane 5), His-tagged BRAF (V600G) protein (lane 6), His-tagged BRAF (V600D) protein (lane 7) and His-tagged BRAF (V600E) protein (lane 8) were blotted with Anti-BRAF(V600A) monoclonal antibody (Cat. #26199).

Immunofluorescence:





Immunofluorescence of cells expressing BRAF proteins with Anti-BRAF(V600A) antibody. HEK293T cells were transfected with pCDNA3-GFP-BRAF (WT) plasmid, pCDNA3-GFP-BRAF(V600A) plasmid, pCDNA3-GFP-BRAF (V600D) plasmid, pCDNA3-GFP-BRAF (V600G) plasmid pCDNA3-GFP-BRAF (V600M) plasmid or pCDNA3-GFP-BRAF (V600E) plasmid, then fixed and stained with Anti-BRAF(V600A) monoclonal antibody (Cat. #26199).