

## BRAF(V600D)

### BRAF(V600D)

**Cat. #:** 26184

**Gene Symbol:** BRAF, BRAF1, RAFB1

**Description:** Anti-BRaf(V600D) Mouse Monoclonal Antibody

**Background:** B-Raf is a member of the Raf family of Ser/Thr protein kinases. It functions downstream of Ras to regulate the MAP kinase signaling pathway. Mutations in the BRAF gene cause diseases. Inherited mutations in BRAF cause cardiofaciocutaneous syndrome. Acquired mutations in BRAF have been found in cancers.

**Immunogen:** A synthetic peptide from the internal region of BRaf(V600D), human origin.

**Applications:** ELISA, WB, IF, IHC

**Recommended Dilutions:**

ELISA 1:1000–1:5000

WB 1:500–1:2000

IF 1:100–1:200

IHC 1:100–1:200

**Concentration:** 0.5 mg/ml

**Host Species:** Mouse

**Format:** Liquid

**Clonality:** Monoclonal

**Isotype:** IgG

**Purity:** Purified from ascites

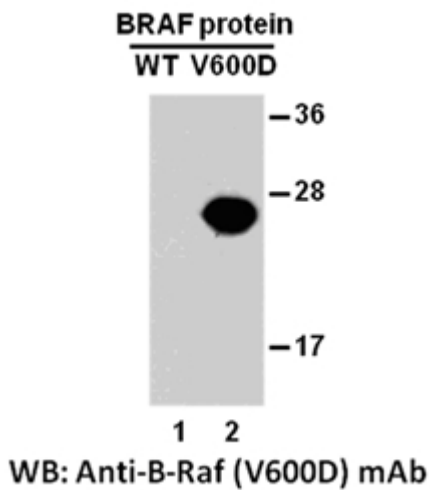
**Preservative:** No

**Constituents:** PBS (without Mg<sup>2+</sup> and Ca<sup>2+</sup>), pH 7.4, 150 mM NaCl, 50% glycerol

**Species Reactivity:** Recognizes B-Raf V600D, but not wild type B-Raf proteins from vertebrates.

**Storage Conditions:** Store at -20°C. Avoid repeated freezing and thawing

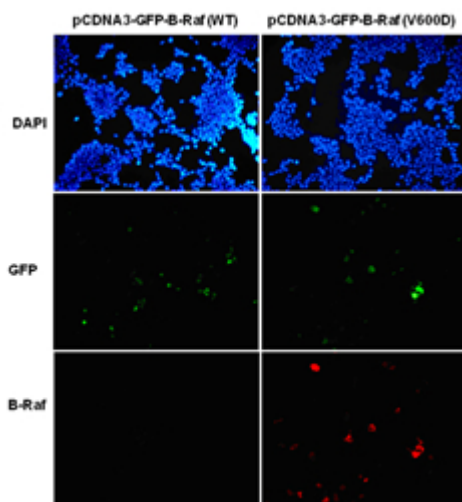
### Western blot:



## Western blot analysis of recombinant B-raf proteins.

Purified His-tagged BRaf(V600D) protein (amino acids 513-693, lane 2) and corresponding wild type protein (lane 1) were blotted with Anti-BRaf(V600D) monoclonal antibody (Cat. # 26184).

## Immunofluorescence:



Immunofluorescence of cells expressing B-Raf proteins with Anti-BRaf(V600D) antibody. HEK293T cells were transfected with pCDNA3-GFP-B-Raf (WT) plasmid (left column) or pCDNA3-GFP-BRaf(V600D) plasmid (right column), then fixed and stained with Anti-BRaf(V600D) monoclonal antibody (Cat. #26184).