

## BRAF(V600E)

### BRAF(V600E)

**Cat. #:** 26039

**Gene Symbol:** BRaf

**Description:** Anti-BRaf(V600E) Mouse Monoclonal Antibody

**Background:** B-Raf is a member of the Raf family of Ser/Thr protein kinases. It functions downstream of Ras to regulate the MAP kinase signaling pathway. Mutations in the BRAF gene cause diseases. Inherited mutations in BRAF cause cardiofaciocutaneous syndrome. Acquired mutations in BRAF have been found in cancers

**Immunogen:** A synthetic peptide from the internal region of BRaf(V600E), human origin.

**Applications:** ELISA, WB, IHC, IP

**Recommended Dilutions:**

ELISA: 1:100–1:5000

WB: 1:100–1:2000

IHC: 1:100–1:1000

**Concentration:** 1 mg/ml

**Host Species:** Mouse

**Format:** Liquid

**Clonality:** Monoclonal

**Isotype:** IgG2b

**Purity:** Purified from ascites

**Storage buffer:**

Preservative: No

Constituents: PBS (without Mg<sup>2+</sup> and Ca<sup>2+</sup>), pH 7.4, 150 mM NaCl, 50% glycerol

**Species Reactivity:** Recognizes B-Raf(V600E), but not wild type B-Raf proteins from vertebrates.

**Storage Conditions:** Store at -20°C. Avoid repeated freezing and thawing

### Western blot:

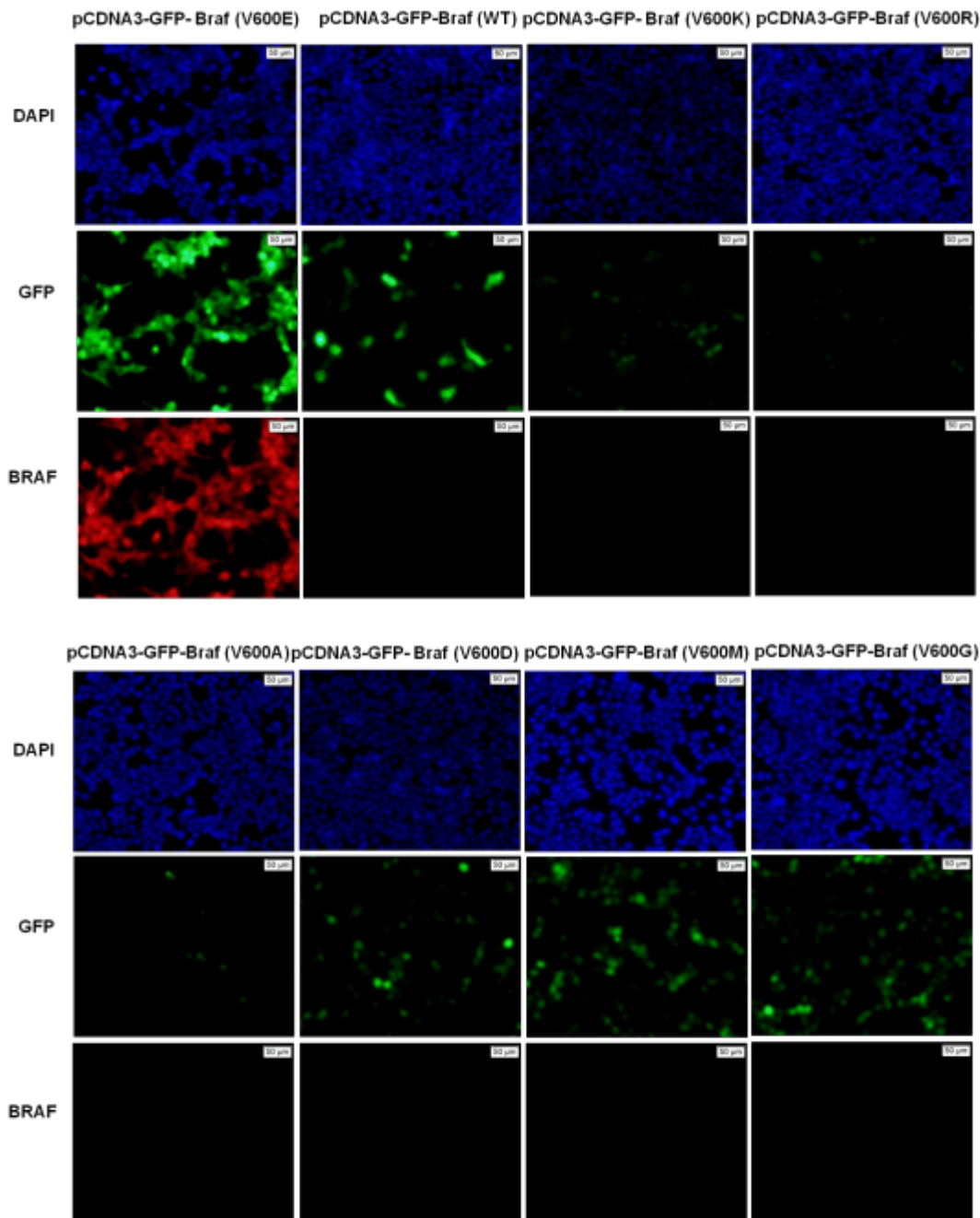


**Western blot analysis of recombinant B-raf proteins with anti-BRaf(V600E) antibody.**

---

Purified His - tagged B-Raf( V600E ) (lane 1) , amino acids 513-693 (lane 2) , corresponding wild type protein (lane 3) , His - tagged B-Raf( V600D ) (lane 3) , His - tagged B-Raf( V600A ) (lane 4) , His - tagged B-Raf( V600G ) (lane 5) , His - tagged B-Raf( V600K ) (lane 6) , His - tagged B-Raf( V600R ) (lane 7) , and His - tagged B-Raf( V600M ) (lane 8) were blotted with anti-B-Raf(V600E) monoclonal antibody (Cat # 26039) .

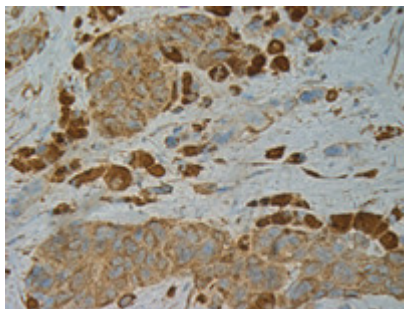
## Immunofluorescence:



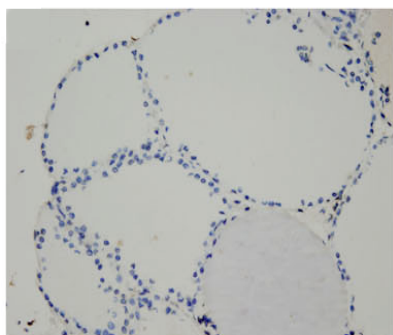
Immunofluorescence of cell expressing BRaf protein with anti-BRaf(V600E) antibody . HEK293T cells were transfected with pCDNA3-GFP- B-Raf( V600E ) plasmid, pCDNA3-GFP- B-Raf( WT ) plasmid, pCDNA3-GFP- B-Raf( V600K

)plasmid, pCDNA3-GFP- B-Raf( V600R )plasmid, pCDNA3-GFP- B-Raf( V600A )plasmid, pCDNA3-GFP- B-Raf( V600D ) plasmid, pCDNA3-GFP-B-Raf(V600M)plasmid, or pCDNA3-GFP-B-Raf(V600G)plasmid, then fixed and stained with anti-B-Raf(V600E) monoclonal antibody (Cat. # 26039).

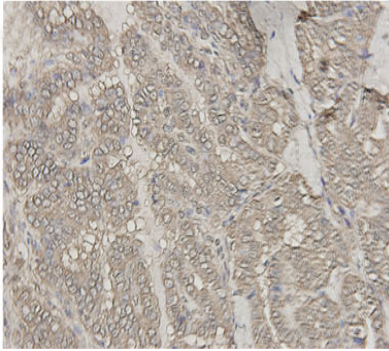
## Immunohistochemistry:



B-Raf(V600E) monoclonal antibody (Cat. # 26039). Tissue samples were fixed with formaldehyde and blocked with 1% serum for 15 min at 37 °C. Antigen retrieval was by heat mediation in citrate buffer (pH6). Samples were then incubated with primary antibody (1:100) overnight at 4°C. A HRP-conjugated Goat anti-mouse IgG (dilution 1:50) was used as secondary antibody.



Immunohistochemical analysis of paraffin-embedded Thyroid Carcinoma tissue - with anti-BRaf (V600E) monoclonal antibody (Cat. # 26039). Tissue samples were fixed with paraffin. Samples were then incubated with primary antibody (1:100) overnight at 4°C. An HRP-conjugated Goat anti-mouse IgG (dilution 1:50) was used as the secondary antibody. Allele-specific PCR validated to be Negative for BRAF V600E.



Immunohistochemical analysis of paraffin-embedded Thyroid Carcinoma tissue - with anti BRAf(V600E) monoclonal antibody (Cat. # 26039). Tissue samples were fixed with paraffin. Samples were then incubated with primary antibody (1:100) overnight at 4°C. A HRP-conjugated Goat anti-mouse IgG (dilution 1:50) was used as secondary antibody. Allele specific PCR validated to be Negative for BRAF V600E.