

## **BST1 (DMC444) IGG1 CHIMERIC MAB**

**Cat.#:** 28232

**Product Name:** Anti-BST1(DMC444) IgG1 Chimeric Monoclonal Antibody

**Synonyms:** CD157

**Description:** Anti-BST1 antibody(DMC444) IgG1 Chimeric Monoclonal Antibody

**Background:** Bone marrow stromal cell antigen-1 is a stromal cell line-derived glycosylphosphatidylinositol-anchored molecule that facilitates pre-B-cell growth. The deduced amino acid sequence exhibits 33% similarity with CD38. BST1 expression is enhanced in bone marrow stromal cell lines derived from patients with rheumatoid arthritis. The polyclonal B-cell abnormalities in rheumatoid arthritis may be; at least in part; attributed to BST1 overexpression in the stromal cell population.

**Applications:** Flow Cyt

**Recommended Dilutions:** Flow Cyt 1:100

**Host Species:** Rabbit

**Isotype:** Rabbit:Human Fc chimeric IgG1

**Purification:** Purified from cell culture supernatant by affinity chromatography

**Species Reactivity:** Human BST1

**Constituents:** Lyophilized from sterile PBS, pH 7.4. 5 % – 8% trehalose is added as protectants before lyophilization.

**Storage & Shipping:** Store at -20°C to -80°C for 12 months in lyophilized form. After reconstitution, if not intended for use within a month, aliquot and store at -80°C (Avoid repeated freezing and thawing).

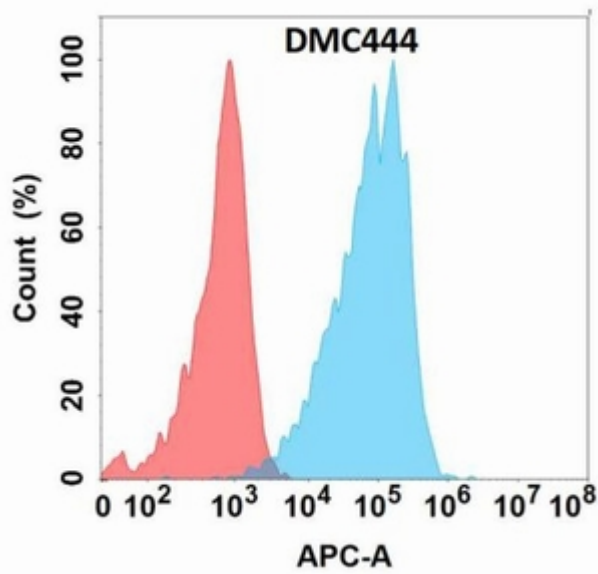


Figure 1. Flow cytometry analysis with Anti-BST1 (DMC444) on Expi293 cells transfected with human BST1 (Blue histogram) or Expi293 transfected with irrelevant protein (Red histogram).