

CSF1R MAB (CABIRALIZUMAB)

Cat.#: 28063

Product Name: Anti-CSF1R(Cabiralizumab) Monoclonal Antibody

Synonyms: CSF1R;-FMS;D115;SFR;IM2;MS;-CSFR

Description: Anti-CSF1R(cabiralizumab) Monoclonal Antibody

Background: Research grade biosimilar. Not for use in therapeutic or diagnostic procedures for humans or animals.

Applications: ELISA; Flow Cyt

Recommended Dilutions: ELISA 1:5000-10000; Flow Cyt 1:100

Host Species: Humanized

Isotype: IgG4

Purification: Purified from cell culture supernatant by affinity chromatography

Species Reactivity: Human CSF1R

Constituents: Lyophilized from sterile PBS, pH 7.4. 5 % – 8% trehalose is added as protectants before lyophilization.

Storage & Shipping: Store at -20°C to -80°C for 12 months in lyophilized form. After reconstitution, if not intended for use within a month, aliquot and store at -80°C (Avoid repeated freezing and thawing).

Anti-CSF1R (cabiralizumab biosimilar) mAb ELISA
0.1 µg of Human CSF1R, His Tagged protein per well

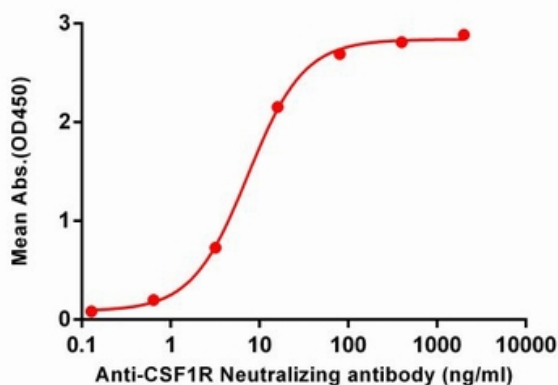


Figure 1. ELISA plate pre-coated by 1 µg/ml (100 µl/well) Human CSF1R , His tagged protein 11190 can bind Anti-CSF1R Neutralizing antibody (28063) in a linear range of 0.2-16 ng/ml.

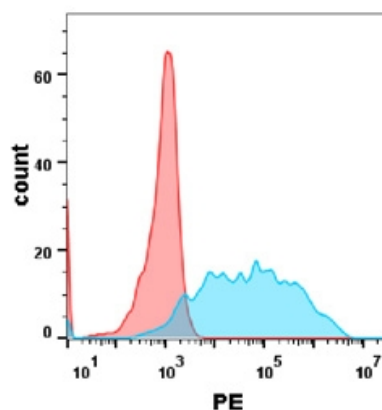


Figure 2. Flow cytometry analysis with Anti-CSF1R mAb 1 µg/ml (cabiralizumab) on Expi293 cells transfected with human CSF1R (Blue histogram) or Expi293 transfected with irrelevant protein (Red histogram) .