

CCL2 MAB (CARLUMAB)

Cat.#: 28121

Product Name: Anti-CCL2(Carlumab) Monoclonal Antibody

Synonyms: HC11;MCAF;MCP-1

Description: Anti-CCL2(carlumab) Monoclonal Antibody

Background: Research grade biosimilar. Not for use in therapeutic or diagnostic procedures for humans or animals.

Applications: ELISA; Flow Cyt

Recommended Dilutions: ELISA 1:5000-10000; Flow Cyt 1:100

Host Species: Homo sapiens

Isotype: IgG1

Purification: Purified from cell culture supernatant by affinity chromatography

Species Reactivity: Human CCL2

Constituents: Lyophilized from sterile PBS, pH 7.4. 5 % – 8% trehalose is added as protectants before lyophilization.

Storage & Shipping: Store at -20°C to -80°C for 12 months in lyophilized form. After reconstitution, if not intended for use within a month, aliquot and store at -80°C (Avoid repeated freezing and thawing).

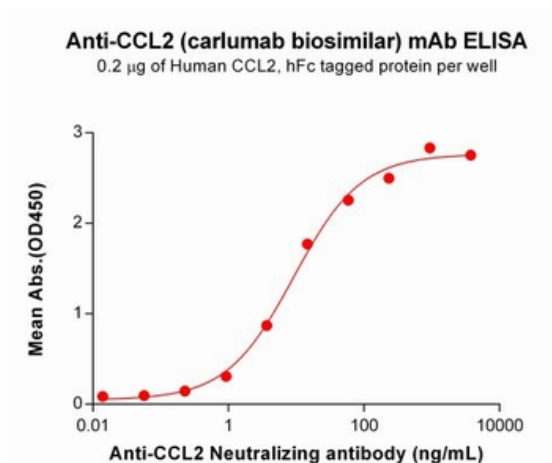


Figure 1. ELISA plate pre-coated by 2 µg/mL (100 µl/well) Human CCL2 Protein, hFc Tag (11671) can bind Anti-CCL2 Neutralizing antibody (28121) in a linear range of 0.92-234.38 ng/mL. In order to specifically detect 28121, mouse anti-human Fab-specific antibody was used as detection antibody.

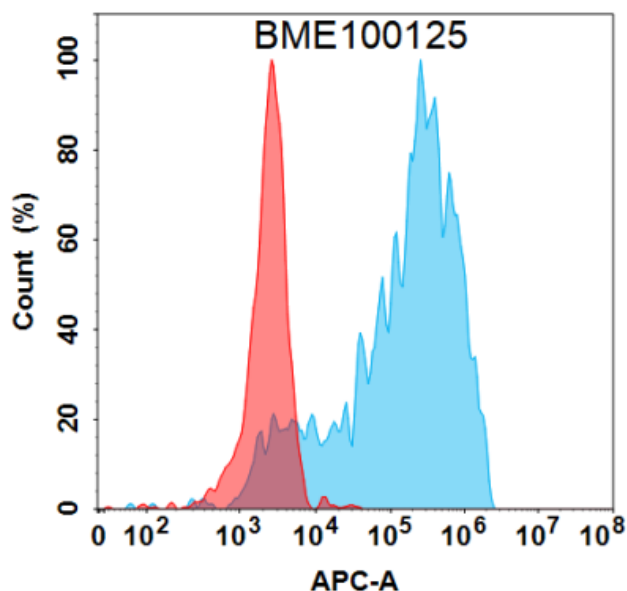


Figure 2. Flow cytometry analysis under cell membrane permeable condition with 1 µg/mL Anti-CCL2 (carlumab biosimilar) mAb (28121) on Expi293 cells transfected with Human CCL2 protein (Blue histogram) or Expi293 transfected with irrelevant protein (Red histogram).



Product Description

Pioneering GTPase and Oncogene Product Development since 2010
