

B-CATENIN PAB

β-Catenin Polyclonal Antibody

Cat. #: 21282

Gene Symbol: CTNNB1, CTNNB

Description: Anti-β-catenin Rabbit Polyclonal Antibody

Background: Beta-catenin (or β-catenin) is a protein that in humans is encoded by the CTNNB1 gene. β-catenin is a subunit of the cadherin protein complex and also acts as an intracellular signal transducer in the Wnt signaling pathway. Deregulation of beta-catenin signaling is an important event in the genesis of a number of malignancies, such as colon cancer, melanoma, hepatocellular carcinoma, ovarian cancer, endometrial cancer, medulloblastoma pilomatricomas, and prostate cancer.

Immunogen: A synthetic peptide from the internal region of β-catenin.

Applications: ELISA, WB, IF, IHC

Recommended Dilutions:

ELISA: 1:1000–1:5000

WB: 1:500–1:2000

IHC: 1:50–1:100

Concentration: 1 mg/ml

Host Species: Rabbit

Format: Liquid

Clonality: Polyclonal

Isotype: IgG

Purity: Purified from serum

Preservative: No

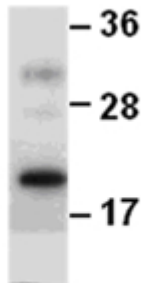
Constituents: PBS (without Mg²⁺ and Ca²⁺), pH 7.4, 150 mM NaCl, 50% glycerol

Species Reactivity: Recognizes β-catenin from vertebrates.

Storage Conditions: Store at -20°C. Avoid repeated freezing and thawing

Western blot:

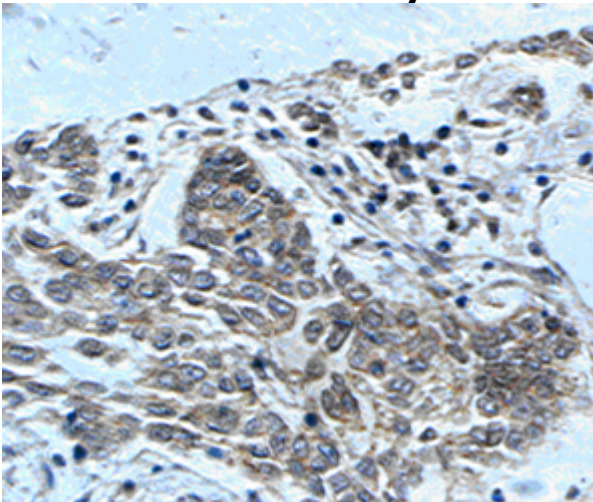
β -catenin protein



WB: Anti- β -Catenin pAb

Western blot analysis of recombinant β -catenin protein. Purified His-tagged β -catenin protein (amino acids 1-76) was blotted with anti- β -catenin rabbit polyclonal antibody (Cat. #21282).

Immunohistochemistry:



Immunohistochemical analysis of paraffin-embedded human breast cancer tissue with anti- β -catenin polyclonal antibody (Cat. #21282). Tissue samples were fixed with formaldehyde and blocked with 1% serum for 15 min at 37 °C. Antigen retrieval was by heat mediation in citrate buffer (pH6). Samples were then incubated with primary antibody (1:50 dilution) overnight at 4°C. A HRP-conjugated Goat anti-mouse IgG (1:50 dilution) was used as secondary antibody.