

HUMAN CAV1 FULL LENGTH PROTEIN

Cat.#: 11123

Product Name: Human CAV1 Full Length Protein

Size : 10 µg, 50 µg and 100 µg

Synonyms: BSCL3; CGL3; LCCNS; MSTP085; PPH3; VIP21

Target: CAV1

UNIPROT ID: Q03135

Description: Human CAV1 full length protein-synthetic nanodisc

Background: The scaffolding protein is the main component of the caveolae plasma membranes found in most cell types. The protein links integrin subunits to the tyrosine kinase FYN, an initiating step in coupling integrins to the Ras-ERK pathway and promoting cell cycle progression. The gene is a tumor suppressor gene candidate and a negative regulator of the Ras-p42/44 mitogen-activated kinase cascade. Caveolin 1 and caveolin 2 are located next to each other on chromosome 7 and express colocalizing proteins that form a stable hetero-oligomeric complex. Mutations in this gene have been associated with Berardinelli-Seip congenital lipodystrophy. Alternatively spliced transcripts encode alpha and beta isoforms of caveolin 1.

Species/Host: HEK293

Molecular Weight: The human full length CAV1 protein has a MW of 20.3 kDa

Formulation & Reconstitution: Lyophilized from nanodisc solubilization buffer (20 mM Tris-HCl, 150 mM NaCl, pH 8.0). Normally 5% – 8% trehalose is added as protectants before lyophilization.

Storage & Shipping: Store at -20°C to -80°C for 12 months in lyophilized form. After reconstitution, if not intended for use within a month, aliquot and store at -80°C (Avoid repeated freezing and thawing). Lyophilized proteins are shipped at ambient temperature.

ELISA assay to evaluate CAV1-Nanodisc
0.2µg Human CAV1-Nanodisc per well

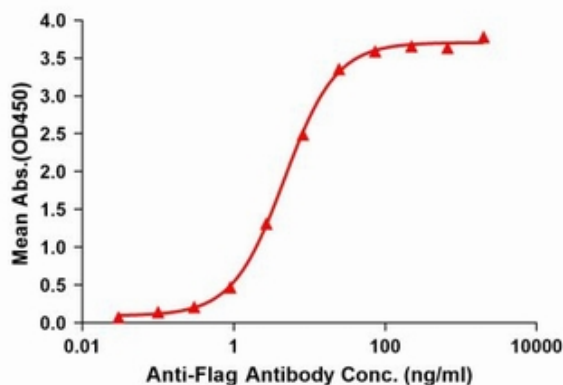


Figure1. Elisa plates were pre-coated with Flag Tag CAV1-Nanodisc (0.2 µg/per well). Serial diluted anti-Flag monoclonal antibody solutions were added, washed, and incubated with secondary antibody before Elisa reading. From above data, the EC50 for anti-Flag monoclonal antibody binding with CAV1-Nanodisc is 4.671ng/ml.

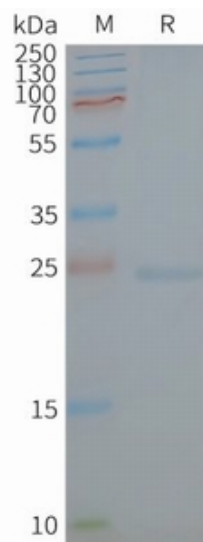


Figure2. Human CAV1-Nanodisc, Flag Tag on SDS-PAGE