

CCR2 (DMC447) IGG1 CHIMERIC MAB**Cat.#:** 28235**Product Name:** Anti-CCR2(DMC447) IgG1 Chimeric Monoclonal Antibody**Synonyms:** CC-CKR-2; MCP-1-R; CD192**Description:** Anti-CCR2 antibody(DMC447) IgG1 Chimeric Monoclonal Antibody**Background:** The protein encoded by this gene is a receptor for monocyte chemoattractant protein-1; a chemokine which specifically mediates monocyte chemotaxis. Monocyte chemoattractant protein-1 is involved in monocyte infiltration in inflammatory diseases such as rheumatoid arthritis as well as in the inflammatory response against tumors. The encoded protein mediates agonist-dependent calcium mobilization and inhibition of adenylyl cyclase. This protein can also be a coreceptor with CD4 for HIV-1 infection. This gene is located in the chemokine receptor gene cluster region of chromosome 3.**Applications:** Flow Cyt**Recommended Dilutions:** Flow Cyt 1:100**Host Species:** Rabbit**Isotype:** Rabbit:Human Fc chimeric IgG1**Purification:** Purified from cell culture supernatant by affinity chromatography**Species Reactivity:** Human CCR2**Constituents:** Lyophilized from sterile PBS, pH 7.4. 5 % – 8% trehalose is added as protectants before lyophilization.**Storage & Shipping:** Store at -20°C to -80°C for 12 months in lyophilized form. After reconstitution, if not intended for use within a month, aliquot and store at -80°C (Avoid repeated freezing and thawing).

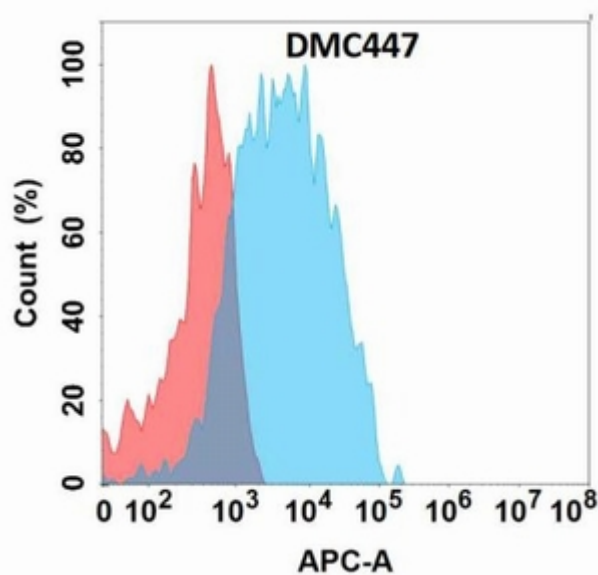


Figure 1. Flow cytometry analysis with Anti-CCR2 (DMC447) on Expi293 cells transfected with human CCR2 (Blue histogram) or Expi293 transfected with irrelevant protein (Red histogram).