

## HUMAN CCR2 FULL LENGTH PROTEIN

**Cat.#:** 11011

**Product Name:** Human CCR2 Full Length Protein

**Size:** 10 µg, 50 µg and 100 µg

**Synonyms:** CC-CKR-2; CCR-2; CCR2A; CCR2B; CD192; CKR2; CKR2A; CKR2B; CMKBR2; MCP-1-R

**Target:** CCR2

**UNIPROT ID:** P41597

**Description:** Human CCR2 full length protein-synthetic nanodisc

**Background:** The protein is a receptor for monocyte chemoattractant protein-1, a chemokine which specifically mediates monocyte chemotaxis. Monocyte chemoattractant protein-1 is involved in monocyte infiltration in inflammatory diseases such as rheumatoid arthritis as well as in the inflammatory response against tumors. The encoded protein mediates agonist-dependent calcium mobilization and inhibition of adenylyl cyclase. This protein can also be a coreceptor with CD4 for HIV-1 infection. This gene is located in the chemokine receptor gene cluster region of chromosome 3.

**Species/Host:** HEK293

**Molecular Weight:** The human full length CCR2 protein has a MW of 41.9 kDa

**Formulation & Reconstitution:** Lyophilized from nanodisc solubilization buffer (20 mM Tris-HCl, 150 mM NaCl, pH 8.0). Normally 5% – 8% trehalose is added as protectants before lyophilization.

**Storage & Shipping:** Store at -20°C to -80°C for 12 months in lyophilized form. After reconstitution, if not intended for use within a month, aliquot and store at -80°C (Avoid repeated freezing and thawing). Lyophilized proteins are shipped at ambient temperature.

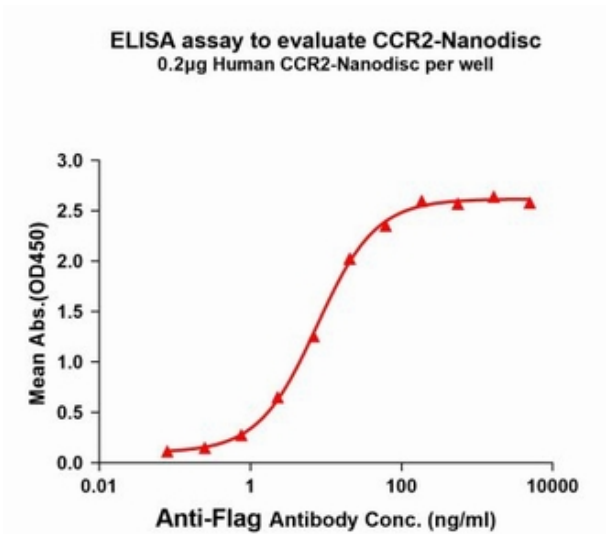


Figure1. Elisa plates were pre-coated with Flag Tag CCR2-Nanodisc (0.2 µg/per well). Serial diluted anti-Flag monoclonal antibody solutions were added, washed, and incubated with secondary antibody before Elisa reading. From above data, the EC50 for anti-Flag monoclonal antibody binding with CCR2-Nanodisc is 7.62ng/ml.

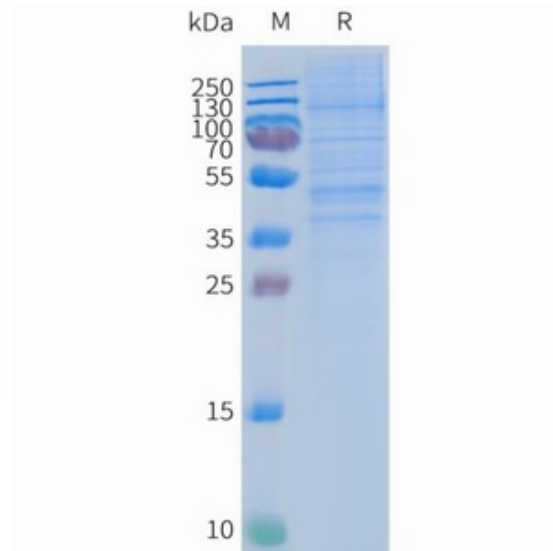


Figure2. Human CCR2-Nanodisc, Flag Tag on SDS-PAGE

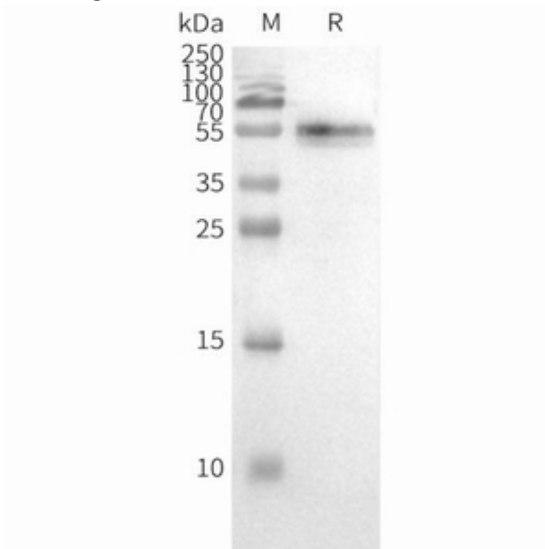


Figure3. WB analysis of Human CCR2-Nanodisc with anti-CCR2 monoclonal antibody (28090), followed by Goat Anti-Human IgG HRP at 1/5000 dilution