

CCR4 (DMC297) IGG1 CHIMERIC MAB**Cat.#:** 28196**Product Name:** Anti-CCR4(DMC297) IgG1 Chimeric Monoclonal Antibody**Synonyms:** CC-CKR-4; CD194; ChemR13; CKR4; CMKBR4; HGCN:14099; K5-5**Description:** Anti-CCR4 antibody(DMC297) IgG1 Chimeric Monoclonal Antibody**Background:** The protein encoded by this gene belongs to the G-protein-coupled receptor family . It is a receptor for the CC chemokine - MIP-1; RANTES; TARC and MCP-1. Chemokines are a group of small polypeptide; structurally related molecules that regulate cell trafficking of various types of leukocytes. The chemokines also play fundamental roles in the development; homeostasis; and function of the immune system; and they have effects on cells of the central nervous system as well as on endothelial cells involved in angiogenesis or angiostasis.**Applications:** Flow Cyt**Recommended Dilutions:** Flow Cyt 1:100**Host Species:** Rabbit**Isotype:** Rabbit:Human Fc chimeric IgG1**Purification:** Purified from cell culture supernatant by affinity chromatography**Species Reactivity:** Human CCR4**Constituents:** Lyophilized from sterile PBS, pH 7.4. 5 % – 8% trehalose is added as protectants before lyophilization.**Storage & Shipping:** Store at -20°C to -80°C for 12 months in lyophilized form. After reconstitution, if not intended for use within a month, aliquot and store at -80°C (Avoid repeated freezing and thawing).

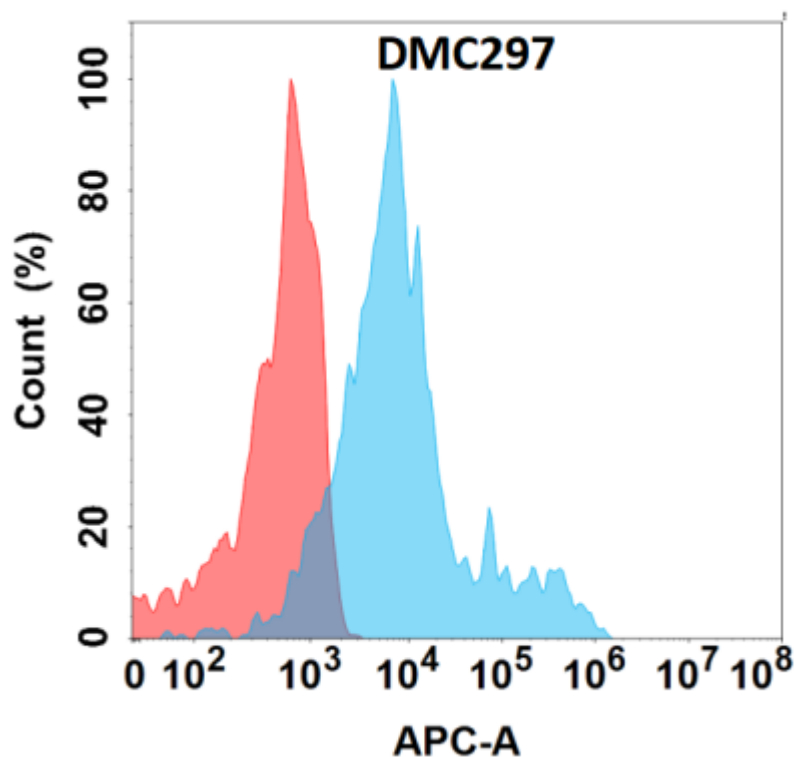


Figure 1. Flow cytometry analysis with Anti-CCR4 (DMC297) on Expi293 cells transfected with human CCR4 (Blue histogram) or Expi293 transfected with irrelevant protein (Red histogram).