

CCR8 MAB (10A11 MAB)

Cat.#: 28070

Product Name: Anti-CCR8(10A11) Monoclonal Antibody

Synonyms: CC-CKR-8;CCR-8;CDw198;CKRL1;CMKBR8;CMKBRL2;CY6;GPRCY6;TER1

Description: Anti-CCR8(10A11) Monoclonal Antibody

Background: Research grade biosimilar. Not for use in therapeutic or diagnostic procedures for humans or animals.

Applications: ELISA, Flow Cyt

Recommended Dilutions: ELISA 1:5000-10000, Flow Cyt 1:100

Host Species: Humanized

Isotype: IgG1

Purification: Purified from cell culture supernatant by affinity chromatography

Species Reactivity: Human CCR8

Constituents: Lyophilized from sterile PBS, pH 7.4. 5% – 8% trehalose is added as protectants before lyophilization.

Storage & Shipping: Store at -20°C to -80°C for 12 months in lyophilized form. After reconstitution, if not intended for use within a month, aliquot and store at -80°C (Avoid repeated freezing and thawing).

Human CCR8, hFc Tagged protein ELISA

0.1 µg Human CCR8, hFc Tagged protein per well

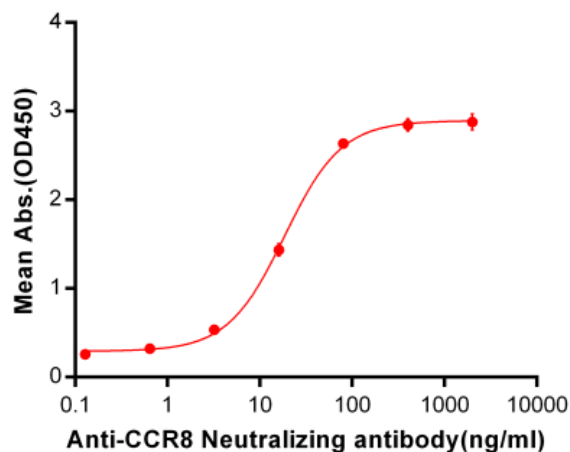


Figure 1. ELISA plate pre-coated by 1µg/ml (100µl/well) Human CCR8, hFc Tag (11761) can bind Anti-CCR8 Neutralizing antibody(28070) in a linear range of 3.2-80 ng/ml. In order to specifically detect 28070, mouse anti-human Fab-specific antibody was used as detection antibody.

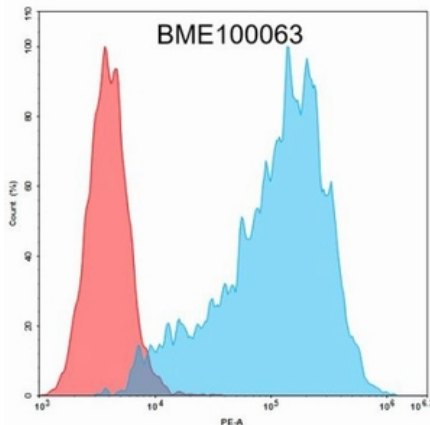


Figure 2. Flow cytometry analysis with 1 µg/ml Anti-CCR8 neutralizing antibody on 293T-CCR8 (293T cells transduced with gene for full length CCR8) Human Cell Line (Red histogram) or 293T Cell Line (Blue histogram).