

CD10 (DM176) RABBIT MAB**Cat.#:** 28519**Product Name:** Anti-CD10(DM176) Rabbit Monoclonal Antibody**Synonyms:** MME;CALLA;CD10;DKFZp686O16152;MGC126681;MGC126707;NEP;SFE;Neprilysin**Description:** Anti-CD10 antibody(DM176) Rabbit Monoclonal Antibody

Background: The protein encoded by this gene is a type II transmembrane glycoprotein and a common acute lymphocytic leukemia antigen that is an important cell surface marker in the diagnosis of human acute lymphocytic leukemia (ALL). The encoded protein is present on leukemic cells of pre-B phenotype; which represent 85% of cases of ALL. This protein is not restricted to leukemic cells; however, and is found on a variety of normal tissues. The protein is a neutral endopeptidase that cleaves peptides at the amino side of hydrophobic residues and inactivates several peptide hormones including glucagon; enkephalins; substance P; neurotensin; oxytocin; and bradykinin.

Applications: ELISA; Flow Cyt**Recommended Dilutions:** ELISA 1:5000–10000; Flow Cyt 1:100**Host Species:** Rabbit**Isotype:** Rabbit IgG**Purification:** Purified from cell culture supernatant by affinity chromatography**Species Reactivity:** Human CD10**Constituents:** Lyophilized from sterile PBS, pH 7.4. 5 % – 8% trehalose is added as protectants before lyophilization.**Storage & Shipping:** Store at –20°C to –80°C for 12 months in lyophilized form. After reconstitution, if not intended for use within a month, aliquot and store at –80°C (Avoid repeated freezing and thawing).

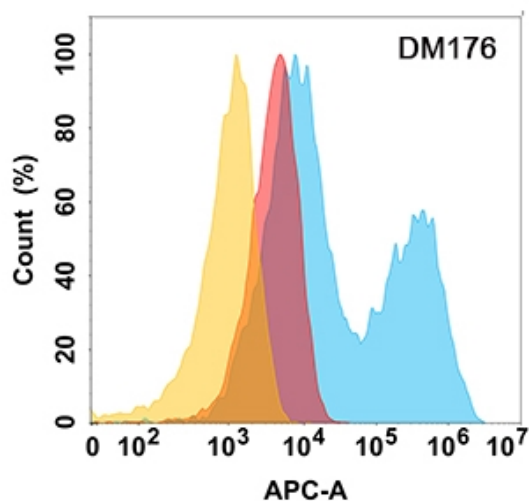


Figure 1. CD10 protein is highly expressed on the surface of Expi293 cell membrane. Flow cytometry analysis with Anti-CD10 (DM176) on Expi293 cells transfected with human CD10 (Blue histogram) or Expi293 transfected with irrelevant protein (Red histogram), and Isotype antibody on Expi293 transfected with irrelevant protein (Orange histogram).