

CD112 (DMC224) IGG1 CHIMERIC MAB

Cat.#: 28173

Product Name: Anti-CD112(DMC224) IgG1 Chimeric Monoclonal Antibody

Synonyms: NECTIN2; HVEB; PRR2; PVRL2; PVRR2

Description: Anti-CD112 antibody(DMC224) IgG1 Chimeric Monoclonal Antibody

Background: This gene encodes a single-pass type I membrane glycoprotein with two Ig-like C2-type domains and an Ig-like V-type domain. This protein is one of the plasma membrane components of adherens junctions. It also serves as an entry for certain mutant strains of herpes simplex virus and pseudorabies virus; and it is involved in cell to cell spreading of these viruses. Variations in this gene have been associated with differences in the severity of multiple sclerosis. Alternate transcriptional splice variants; encoding different isoforms; have been characterized.

Applications: ELISA; Flow Cyt

Recommended Dilutions: ELISA 1:5000-10000; Flow Cyt 1:100

Host Species: Rabbit

Isotype: Rabbit:Human Fc chimeric IgG1

Purification: Purified from cell culture supernatant by affinity chromatography

Species Reactivity: Human CD112

Constituents: Lyophilized from sterile PBS, pH 7.4. 5 % – 8% trehalose is added as protectants before lyophilization.

Storage & Shipping: Store at -20°C to -80°C for 12 months in lyophilized form. After reconstitution, if not intended for use within a month, aliquot and store at -80°C (Avoid repeated freezing and thawing).

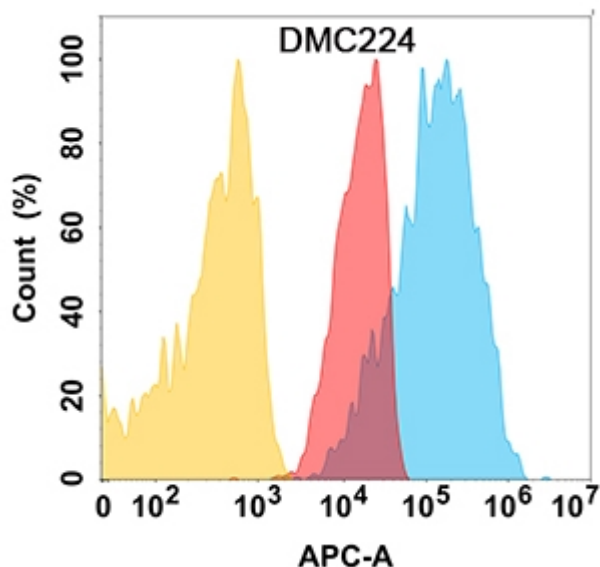


Figure 1. CD112 protein is highly expressed on the surface of Expi293 cell membrane. Flow cytometry analysis with Anti-CD112 (DMC224) on Expi293 cells transfected with human CD112 (Blue histogram) or Expi293 transfected with irrelevant protein (Red histogram), and Isotype antibody on Expi293 transfected with irrelevant protein (Orange histogram).