

CD117 (DMC446) IGG1 CHIMERIC MAB**Cat.#:** 28234**Product Name:** Anti-CD117(DMC446) IgG1 Chimeric Monoclonal Antibody**Synonyms:** C-Kit; CD117; MASTC; PBT; SCFR; KIT**Description:** Anti-CD117 antibody(DMC446) IgG1 Chimeric Monoclonal Antibody

Background: This gene encodes a receptor tyrosine kinase. This gene was initially identified as a homolog of the feline sarcoma viral oncogene v-kit and is often referred to as proto-oncogene c-Kit. The canonical form of this glycosylated transmembrane protein has an N-terminal extracellular region with five immunoglobulin-like domains; a transmembrane region; and an intracellular tyrosine kinase domain at the C-terminus. Upon activation by its cytokine ligand; stem cell factor (SCF); this protein phosphorylates multiple intracellular proteins that play a role in the proliferation; differentiation; migration and apoptosis of many cell types and thereby plays an important role in hematopoiesis; stem cell maintenance; gametogenesis; melanogenesis; and in mast cell development; migration and function. This protein can be a membrane-bound or soluble protein. Mutations in this gene are associated with gastrointestinal stromal tumors; mast cell disease; acute myelogenous leukemia; and piebaldism. Multiple transcript variants encoding different isoforms have been found for this gene.

Applications: Flow Cyt**Recommended Dilutions:** Flow Cyt 1:100**Host Species:** Rabbit**Isotype:** Rabbit:Human Fc chimeric IgG1**Purification:** Purified from cell culture supernatant by affinity chromatography**Species Reactivity:** Human CD117**Constituents:** Lyophilized from sterile PBS, pH 7.4. 5 % – 8% trehalose is added as protectants before lyophilization.**Storage & Shipping:** Store at -20°C to -80°C for 12 months in lyophilized form. After reconstitution, if not intended for use within a month, aliquot and store at -80°C (Avoid repeated freezing and thawing).

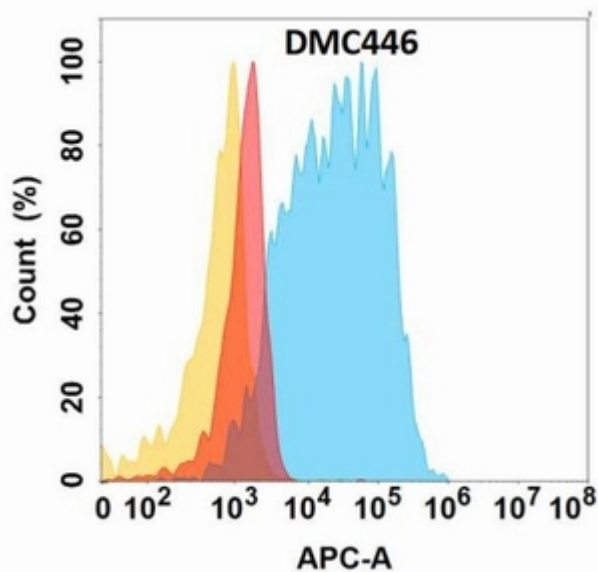


Figure 1. Flow cytometry analysis with Anti-CD117 (DMC446) on Expi293 cells transfected with human CD117 (Blue histogram) or Expi293 transfected with irrelevant protein (Red histogram), and Isotype antibody on Expi293 transfected with irrelevant protein (Orange histogram).