

CD123 (DM31) RABBIT MAB

Cat.#: 28318

Product Name: Anti-CD123(DM31) Rabbit Monoclonal Antibody

Synonyms: IL3R; IL3RA; IL-3R α ; IL-3R-alpha; IL3RAY; IL3RX; IL3RY; CD123 antigen; CD123; hIL3R α ; hIL-3R α ; MGC34174; IL-3 R alpha

Description: Anti-CD123 antibody(DM31) Rabbit Monoclonal Antibody

Background: Interleukin 3 receptor alpha (low affinity) (IL3RA); also known as CD123 (Cluster of Differentiation 123) is a 70-kD glycoprotein member of the hematopoietin receptor superfamily. This protein associates with a beta subunit common to the receptors for IL-5 and granulocyte-macrophage colony-stimulating factor (GM-CSF) to form a high-affinity receptor for IL-3. The interleukin-3 receptor α chain (CD123) has been identified as a potential immunotherapeutic target because it is overexpressed in AML compared with normal hematopoietic stem cells.

Applications: ELISA; Flow Cyt

Recommended Dilutions: ELISA 1:5000-10000; Flow Cyt 1:100

Host Species: Rabbit

Isotype: Rabbit IgG

Purification: Purified from cell culture supernatant by affinity chromatography

Species Reactivity: Human CD123

Constituents: Lyophilized from sterile PBS, pH 7.4. 5 % – 8% trehalose is added as protectants before lyophilization.

Storage & Shipping: Store at -20°C to -80°C for 12 months in lyophilized form. After reconstitution, if not intended for use within a month, aliquot and store at -80°C (Avoid repeated freezing and thawing).

A

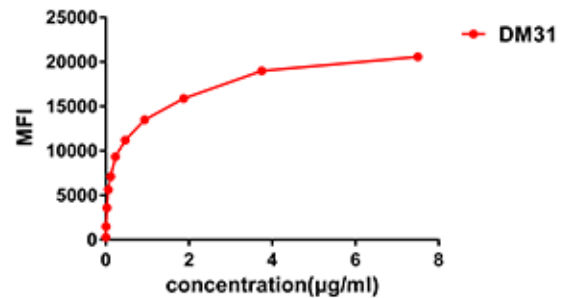
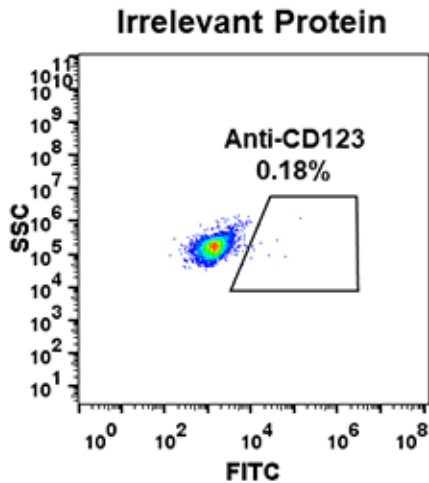


Figure 1: Expi 293 cell line transfected with irrelevant protein (left) and human CD123(right) were surface stained with Rabbit anti-CD123 monoclonal antibody 1µg/ml (clone: DM31) followed by Alexa 488-conjugated anti-rabbit IgG secondary antibody.

Figure 2. Flow cytometry data of serially titrated Rabbit anti-CD123 monoclonal antibody (clone: DM31) on THP-1 cells. The Y-axis represents the mean fluorescence intensity (MFI) while the X-axis represents the concentration of IgG used.

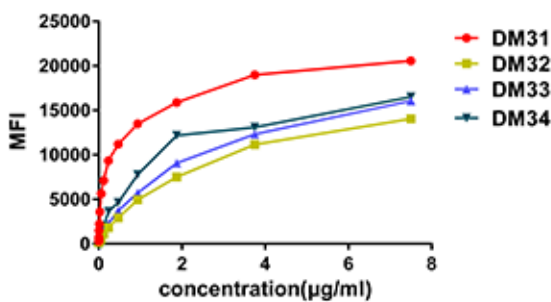


Figure 3. Affinity ranking of different Rabbit anti-CD123 mAb clones by titration of different concentration onto THP-1 cells. The Y-axis represents the mean fluorescence intensity (MFI) while the X-axis represents the concentration of IgG used.



Product Description

Pioneering GTPase and Oncogene Product Development since 2010
