

CD155 (DM146) RABBIT MAB

Cat.#: 28490

Product Name: Anti-CD155(DM146) Rabbit Monoclonal Antibody

Synonyms: PVR; FLJ25946; PVS; CD155; TAGE4; HVED; NECL5

Description: Anti-CD155 antibody(DM146) Rabbit Monoclonal Antibody

Background: The protein encoded by this gene is a transmembrane glycoprotein belonging to the immunoglobulin superfamily. The external domain mediates cell attachment to the extracellular matrix molecule vitronectin; while its intracellular domain interacts with the dynein light chain Tctex-1:DYNLT1. The gene is specific to the primate lineage; and serves as a cellular receptor for poliovirus in the first step of poliovirus replication. Multiple transcript variants encoding different isoforms have been found for this gene.

Applications: ELISA; Flow Cyt

Recommended Dilutions: ELISA 1:5000-10000; Flow Cyt 1:100

Host Species: Rabbit

Isotype: Rabbit IgG

Purification: Purified from cell culture supernatant by affinity chromatography

Species Reactivity: Human CD155

Constituents: Lyophilized from sterile PBS, pH 7.4. 5% – 8% trehalose is added as protectants before lyophilization.

Storage & Shipping: Store at -20°C to -80°C for 12 months in lyophilized form. After reconstitution, if not intended for use within a month, aliquot and store at -80°C (Avoid repeated freezing and thawing).

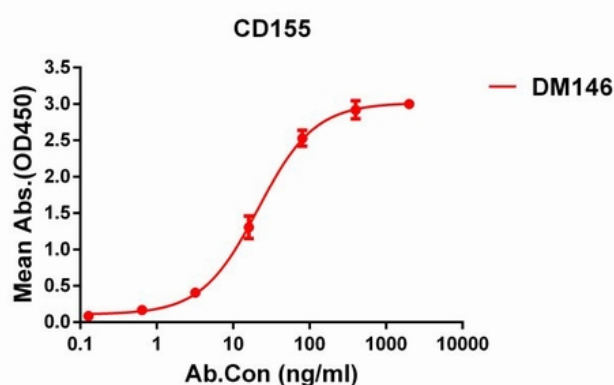


Figure 1. ELISA plate pre-coated by 1 µg/ml (100 µl/well) Human CD155 protein, mFc tagged protein 11155 can bind Rabbit anti-CD155 monoclonal antibody (clone: DM146) in a linear range of 5-100 ng/ml.

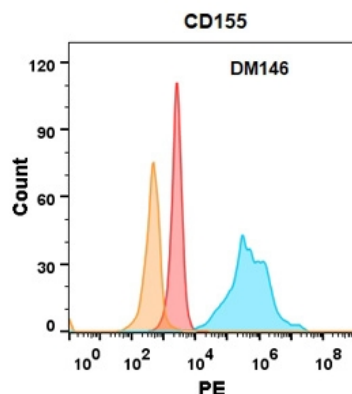


Figure 2. CD155 protein is highly expressed on the surface of Expi293 cell membrane. Flow cytometry analysis with Anti-CD155 (DM146) on Expi293 cells transfected with human CD155 (Blue histogram) or Expi293 transfected with irrelevant protein (Red histogram), and Isotype antibody on Expi293 transfected with irrelevant protein (Orange histogram).