

## CD166 (DMC682) IGG1 CHIMERIC MAB

**Cat.#:** 28280

**Product Name:** Anti-CD166(DMC682) IgG1 Chimeric Monoclonal Antibody

**Synonyms:** CD166; MEMD

**Description:** Anti-CD166 antibody(DMC682) IgG1 Chimeric Monoclonal Antibody

**Background:** This gene encodes activated leukocyte cell adhesion molecule (ALCAM); also known as CD166 (cluster of differentiation 166); which is a member of a subfamily of immunoglobulin receptors with five immunoglobulin-like domains (VVC2C2C2) in the extracellular domain. This protein binds to T-cell differentiation antigene CD6; and is implicated in the processes of cell adhesion and migration. Multiple alternatively spliced transcript variants encoding different isoforms have been found. [provided by RefSeq; Aug 2011]

**Applications:** Flow Cyt

**Recommended Dilutions:** Flow Cyt 1:100

**Host Species:** Rabbit

**Isotype:** Rabbit:Human Fc chimeric IgG1

**Purification:** Purified from cell culture supernatant by affinity chromatography

**Species Reactivity:** Human CD166

**Constituents:** Lyophilized from sterile PBS, pH 7.4. 5 % – 8% trehalose is added as protectants before lyophilization.

**Storage & Shipping:** Store at -20°C to -80°C for 12 months in lyophilized form. After reconstitution, if not intended for use within a month, aliquot and store at -80°C (Avoid repeated freezing and thawing).

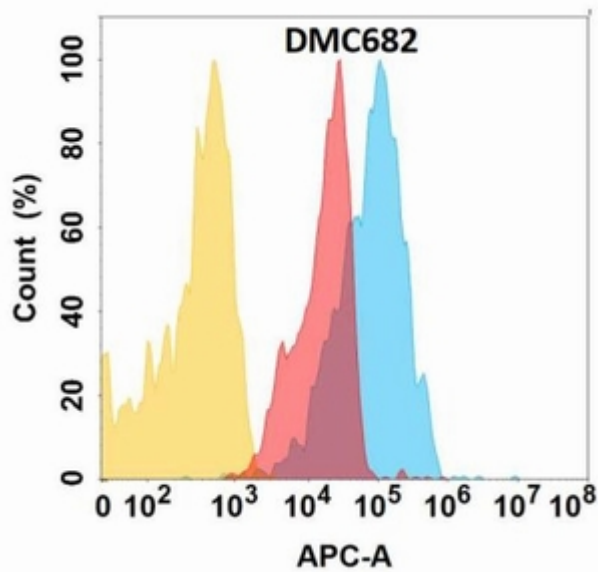


Figure 1. CD166 protein is expressed on the surface of Expi293 cell membrane. Flow cytometry analysis with Anti-CD166 (DMC682) on Expi293 cells transfected with human CD166 (Blue histogram) or Expi293 transfected with irrelevant protein (Red histogram), and Isotype antibody on Expi293 transfected with irrelevant protein (Orange histogram).