

CD200 (DM156) RABBIT MAB

Cat.#: 28500

Product Name: Anti-CD200(DM156) Rabbit Monoclonal Antibody

Synonyms: CD200;MOX1;MOX2;MRC;OX-2;My033

Description: Anti-CD200 antibody(DM156) Rabbit Monoclonal Antibody

Background: This gene encodes a type I membrane glycoprotein containing two extracellular immunoglobulin domains; a transmembrane and a cytoplasmic domain. This gene is expressed by various cell types; including B cells; a subset of T cells; thymocytes; endothelial cells; and neurons. The encoded protein plays an important role in immunosuppression and regulation of anti-tumor activity. Alternative splicing results in multiple transcript variants encoding different isoforms.

Applications: ELISA; Flow Cyt

Recommended Dilutions: ELISA 1:5000-10000; Flow Cyt 1:100

Host Species: Rabbit

Isotype: Rabbit IgG

Purification: Purified from cell culture supernatant by affinity chromatography

Species Reactivity: Human CD200

Constituents: Lyophilized from sterile PBS, pH 7.4. 5 % – 8% trehalose is added as protectants before lyophilization.

Storage & Shipping: Store at -20°C to -80°C for 12 months in lyophilized form. After reconstitution, if not intended for use within a month, aliquot and store at -80°C (Avoid repeated freezing and thawing).

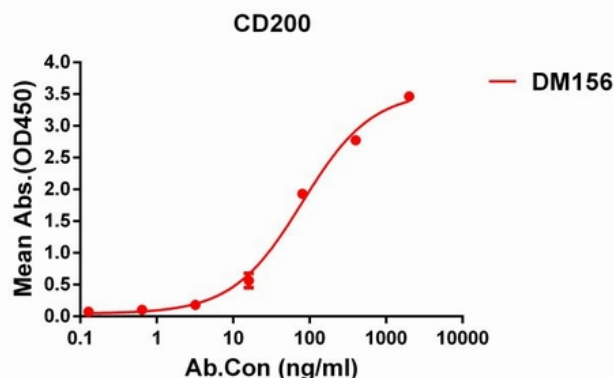


Figure 1. ELISA plate pre-coated by 1 µg/ml (100 µl/well) Human CD200 protein, His tagged protein 11278 can bind Rabbit anti-CD200 monoclonal antibody (clone: DM156) in a linear range of 5-1000 ng/ml.

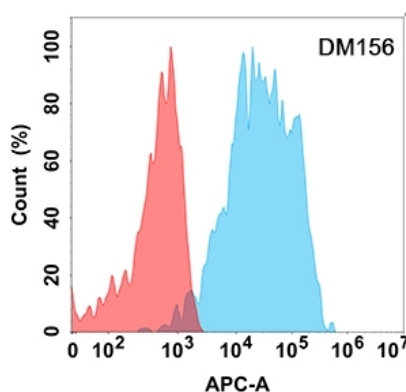


Figure 2. Flow cytometry analysis with Anti-CD200 (DM156) on Expi293 cells transfected with human CD200 (Blue histogram) or Expi293 transfected with irrelevant protein (Red histogram).