

CD21 (DMC280) IGG1 CHIMERIC MAB**Cat.#:** 28188**Product Name:** Anti-CD21(DMC280) IgG1 Chimeric Monoclonal Antibody**Synonyms:** C3DR; CD21; CR; CVID7; SLEB9**Description:** Anti-CD21 antibody(DMC280) IgG1 Chimeric Monoclonal Antibody**Background:** This gene encodes a membrane protein; which functions as a receptor for Epstein-Barr virus (EBV) binding on B and T lymphocytes. Genetic variations in this gene are associated with susceptibility to systemic lupus erythematosus type 9 (SLEB9). Alternatively spliced transcript variants encoding different isoforms have been found for this gene.**Applications:** Flow Cyt**Recommended Dilutions:** Flow Cyt 1:100**Host Species:** Rabbit**Isotype:** Rabbit:Human Fc chimeric IgG1**Purification:** Purified from cell culture supernatant by affinity chromatography**Species Reactivity:** Human CD21**Constituents:** Lyophilized from sterile PBS, pH 7.4. 5 % – 8% trehalose is added as protectants before lyophilization.**Storage & Shipping:** Store at -20°C to -80°C for 12 months in lyophilized form. After reconstitution, if not intended for use within a month, aliquot and store at -80°C (Avoid repeated freezing and thawing).

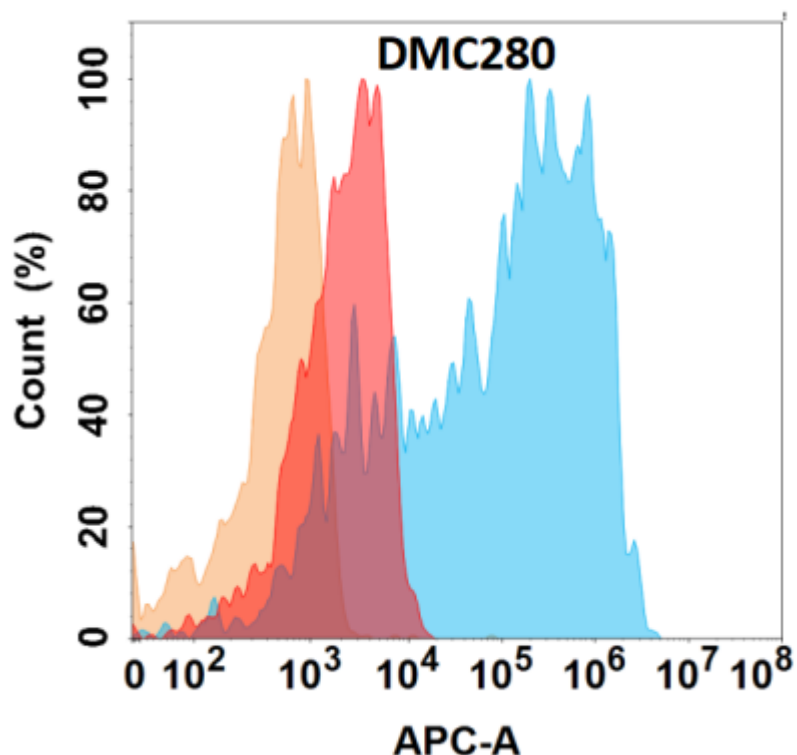


Figure 1. Flow cytometry analysis with Anti-CD21 (DMC280) on Expi293 cells transfected with human CD21 (Blue histogram) or Expi293 transfected with irrelevant protein (Red histogram), and Isotype antibody on Expi293 transfected with irrelevant protein (Orange histogram).