

CD24 (DMC213) IGG1 CHIMERIC MAB

Cat.#: 28166

Product Name: Anti-CD24(DMC213) IgG1 Chimeric Monoclonal Antibody

Synonyms: CD24A

Description: Anti-CD24 antibody(DMC213) IgG1 Chimeric Monoclonal Antibody

Background: This gene encodes a sialoglycoprotein that is expressed on mature granulocytes and B cells and modulates growth and differentiation signals to these cells. The precursor protein is cleaved to a short 32 amino acid mature peptide which is anchored via a glycosyl phosphatidylinositol (GPI) link to the cell surface. This gene was missing from previous genome assemblies; but is properly located on chromosome 6. Non-transcribed pseudogenes have been designated on chromosomes 1; 15; 20; and Y. Alternative splicing results in multiple transcript variants.

Applications: ELISA; Flow Cyt

Recommended Dilutions: ELISA 1:5000-10000; Flow Cyt 1:100

Host Species: Rabbit

Isotype: Rabbit:Human Fc chimeric IgG1

Purification: Purified from cell culture supernatant by affinity chromatography

Species Reactivity: Human CD24

Constituents: Lyophilized from sterile PBS, pH 7.4. 5 % – 8% trehalose is added as protectants before lyophilization.

Storage & Shipping: Store at -20°C to -80°C for 12 months in lyophilized form. After reconstitution, if not intended for use within a month, aliquot and store at -80°C (Avoid repeated freezing and thawing).

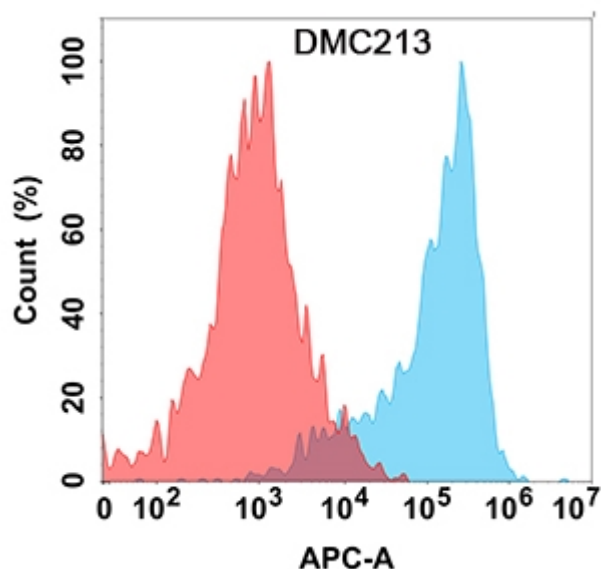


Figure 1. Flow cytometry analysis with Anti-CD24 (DMC213) on Expi293 cells transfected with human CD24 (Blue histogram) or Expi293 transfected with irrelevant protein (Red histogram).