

CD24 (DMC217) IGG1 CHIMERIC MAB**Cat.#:** 28167**Product Name:** Anti-CD24(DMC217) IgG1 Chimeric Monoclonal Antibody**Synonyms:** CD24A**Description:** Anti-CD24 antibody(DMC217) IgG1 Chimeric Monoclonal Antibody

Background: This gene encodes a sialoglycoprotein that is expressed on mature granulocytes and B cells and modulates growth and differentiation signals to these cells. The precursor protein is cleaved to a short 32 amino acid mature peptide which is anchored via a glycosyl phosphatidylinositol (GPI) link to the cell surface. This gene was missing from previous genome assemblies; but is properly located on chromosome 6. Non-transcribed pseudogenes have been designated on chromosomes 1; 15; 20; and Y. Alternative splicing results in multiple transcript variants.

Applications: ELISA; Flow Cyt**Recommended Dilutions:** ELISA 1:5000-10000; Flow Cyt 1:100**Host Species:** Rabbit**Isotype:** Rabbit:Human Fc chimeric IgG1**Purification:** Purified from cell culture supernatant by affinity chromatography**Species Reactivity:** Human CD24**Constituents:** Lyophilized from sterile PBS, pH 7.4. 5 % – 8% trehalose is added as protectants before lyophilization.**Storage & Shipping:** Store at -20°C to -80°C for 12 months in lyophilized form. After reconstitution, if not intended for use within a month, aliquot and store at -80°C (Avoid repeated freezing and thawing).

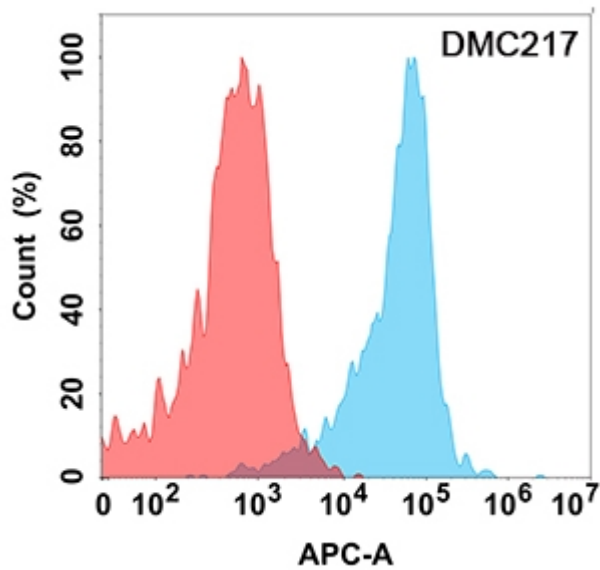


Figure 1. Flow cytometry analysis with Anti-CD24 (DMC217) on Expi293 cells transfected with human CD24 (Blue histogram) or Expi293 transfected with irrelevant protein (Red histogram).