

CD27 (DM58) RABBIT MAB

Cat.#: 28359

Product Name: Anti-CD27(DM58) Rabbit Monoclonal Antibody

Synonyms: CD27; TNFRSF7; S152; T14; Tp55

Description: Anti-CD27 antibody(DM58) Rabbit Monoclonal Antibody

Background: The protein encoded by this gene is a member of the TNF-receptor superfamily. This receptor is required for generation and long-term maintenance of T cell immunity. It binds to ligand CD70; and plays a key role in regulating B-cell activation and immunoglobulin synthesis. This receptor transduces signals that lead to the activation of NF-kappaB and MAPK8:JNK. Adaptor proteins TRAF2 and TRAF5 have been shown to mediate the signaling process of this receptor. CD27-binding protein (SIVA); a proapoptotic protein; can bind to this receptor and is thought to play an important role in the apoptosis induced by this receptor.

Applications: ELISA; Flow Cyt

Recommended Dilutions: ELISA 1:5000-10000; Flow Cyt 1:100

Host Species: Rabbit

Isotype: Rabbit IgG

Purification: Purified from cell culture supernatant by affinity chromatography

Species Reactivity: Human CD27

Constituents: Lyophilized from sterile PBS, pH 7.4. 5% - 8% trehalose is added as protectants before lyophilization.

Storage & Shipping: Store at -20°C to -80°C for 12 months in lyophilized form. After reconstitution, if not intended for use within a month, aliquot and store at -80°C (Avoid repeated freezing and thawing).

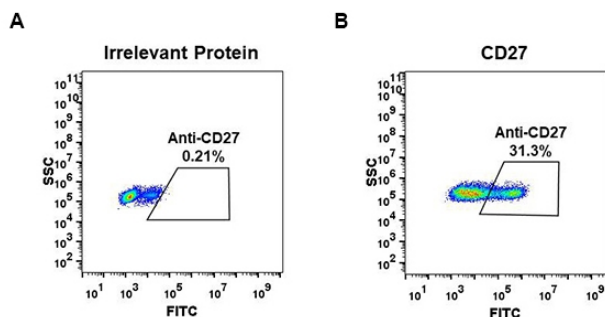


Figure 1. Expi 293 cell line transfected with irrelevant protein (A) and human CD27 (B) were surface stained with Rabbit anti-CD27 monoclonal antibody 1µg/ml (clone: DM58) followed by Alexa 488-conjugated anti-rabbit IgG secondary antibody.

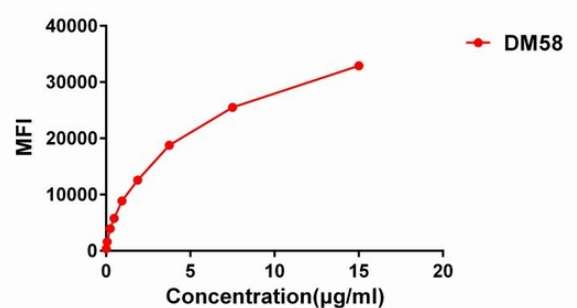


Figure 2. Flow cytometry data of serially titrated Rabbit anti-CD27 monoclonal antibody (clone: DM58) on Raji cells. The Y-axis represents the mean fluorescence intensity (MFI) while the X-axis represents the concentration of IgG used.

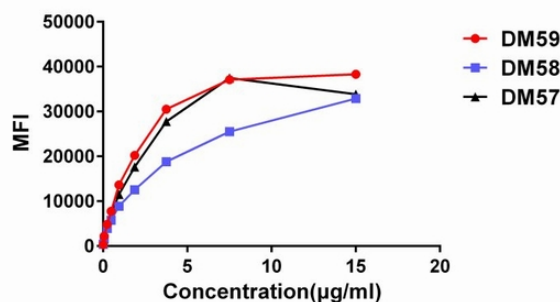


Figure 3. Affinity ranking of different Rabbit anti-CD27 mAb clones by titration of different concentration onto Raji cells. The Y-axis represents the mean fluorescence intensity (MFI) while the X-axis represents the concentration of IgG used.