

## CD30 (DM105) RABBIT MAB

**Cat.#:** 28450

**Product Name:** Anti-CD30(DM105) Rabbit Monoclonal Antibody

**Synonyms:** TNFRSF8;CD30;DIS166E;Ki-1

**Description:** Anti-CD30 antibody(DM105) Rabbit Monoclonal Antibody

**Background:** The protein encoded by this gene is a member of the TNF-receptor superfamily. This receptor is expressed by activated; but not by resting; T and B cells. TRAF2 and TRAF5 can interact with this receptor; and mediate the signal transduction that leads to the activation of NF-kappaB. This receptor is a positive regulator of apoptosis; and also has been shown to limit the proliferative potential of autoreactive CD8 effector T cells and protect the body against autoimmunity. Two alternatively spliced transcript variants of this gene encoding distinct isoforms have been reported.

**Applications:** ELISA; Flow Cyt

**Recommended Dilutions:** ELISA 1:5000-10000; Flow Cyt 1:100

**Host Species:** Rabbit

**Isotype:** Rabbit IgG

**Purification:** Purified from cell culture supernatant by affinity chromatography

**Species Reactivity:** Human CD30

**Constituents:** Lyophilized from sterile PBS, pH 7.4. 5% – 8% trehalose is added as protectants before lyophilization.

**Storage & Shipping:** Store at -20°C to -80°C for 12 months in lyophilized form. After reconstitution, if not intended for use within a month, aliquot and store at -80°C (Avoid repeated freezing and thawing).

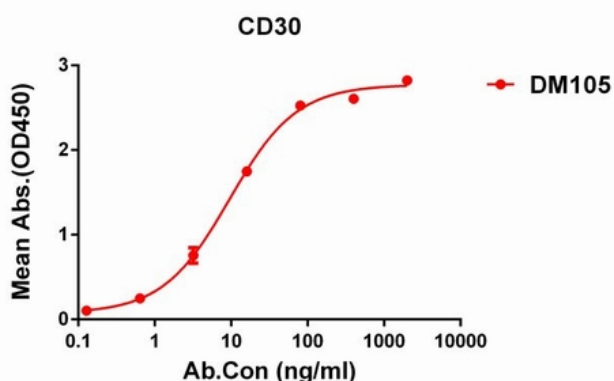


Figure 1. ELISA plate pre-coated by 2 µg/ml (100 µl/well) Human CD30 protein, His tagged protein 11291 can bind Rabbit anti-CD30 monoclonal antibody (clone: DM105) in a linear range of 0.12-80 ng/ml.

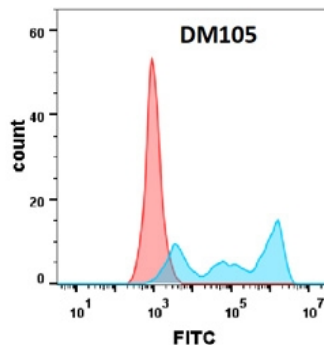


Figure 2. Flow cytometry analysis with Anti-CD30 (DM105) on Expi293 cells transfected with human CD30 (Blue histogram) or Expi293 transfected with irrelevant protein (Red histogram).