

## CD33 (DM77) RABBIT MAB

**Cat.#:** 28395

**Product Name:** Anti-CD33(DM77) Rabbit Monoclonal Antibody

**Synonyms:** CD33;SIGLEC3;gp67

**Description:** Anti-CD33 antibody(DM77) Rabbit Monoclonal Antibody

**Background:** Sialic-acid-binding immunoglobulin-like lectin (Siglec) that plays a role in mediating cell-cell interactions and in maintaining immune cells in a resting state. Preferentially recognizes and binds alpha-2,3- and more avidly alpha-2,6-linked sialic acid-bearing glycans. Upon engagement of ligands such as Clq or sialylated glycoproteins; two immunoreceptor tyrosine-based inhibitory motifs (ITIMs) located in CD33 cytoplasmic tail are phosphorylated by Src-like kinases such as LCK. These phosphorylations provide docking sites for the recruitment and activation of protein-tyrosine phosphatases PTPN6:SHP-1 and PTPN11:SHP-2. In turn; these phosphatases regulate downstream pathways through dephosphorylation of signaling molecules. One of the repressive effect of CD33 on monocyte activation requires phosphoinositide 3-kinase:PI3K.

**Applications:** ELISA; Flow Cyt

**Recommended Dilutions:** ELISA 1:5000-10000; Flow Cyt 1:100

**Host Species:** Rabbit

**Isotype:** Rabbit IgG

**Purification:** Purified from cell culture supernatant by affinity chromatography

**Species Reactivity:** Human CD33

**Constituents:** Lyophilized from sterile PBS, pH 7.4. 5 % – 8% trehalose is added as protectants before lyophilization.

**Storage & Shipping:** Store at -20°C to -80°C for 12 months in lyophilized form. After reconstitution, if not intended for use within a month, aliquot and store at -80°C (Avoid repeated freezing and thawing).

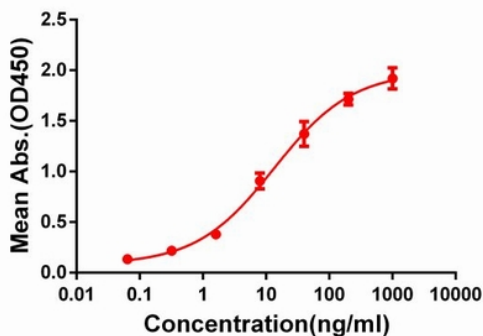


Figure 1. ELISA plate pre-coated by 2 µg/ml (100 µl/well) Human CD33 protein, hFc-His tagged protein 11166 can bind Rabbit anti-CD33 monoclonal antibody (clone: DM77) in a linear range of 1-100 ng/ml.

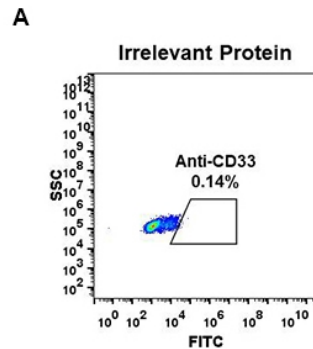


Figure 2. Expi 293 cell line transfected with irrelevant protein (A) and human CD33 (B) were surface stained with Rabbit anti-CD33 monoclonal antibody 1 µg/ml (clone: DM77) followed by Alexa 488-conjugated anti-rabbit IgG secondary antibody.

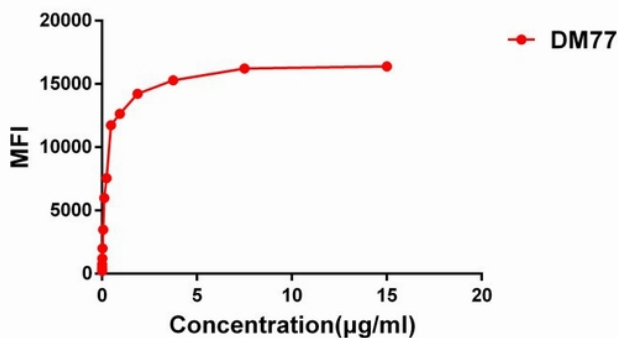


Figure 3. Flow cytometry data of serially titrated Rabbit anti-CD33 monoclonal antibody (clone: DM77) on Expi 293 cell line transfected with human CD33. The Y-axis represents the mean fluorescence intensity (MFI) while the X-axis represents the concentration of IgG used.



# Product Description

Pioneering GTPase and Oncogene Product Development since 2010

---