

CD34 (DM136) RABBIT MAB

Cat.#: 28481

Product Name: Anti-CD34(DM136) Rabbit Monoclonal Antibody

Synonyms: CD34

Description: Anti-CD34 antibody(DM136) Rabbit Monoclonal Antibody

Background: The protein encoded by this gene may play a role in the attachment of stem cells to the bone marrow extracellular matrix or to stromal cells. This single-pass membrane protein is highly glycosylated and phosphorylated by protein kinase C. Two transcript variants encoding different isoforms have been found for this gene.

Applications: ELISA; Flow Cyt

Recommended Dilutions: ELISA 1:5000-10000; Flow Cyt 1:100

Host Species: Rabbit

Isotype: Rabbit IgG

Purification: Purified from cell culture supernatant by affinity chromatography

Species Reactivity: Human CD34

Constituents: Lyophilized from sterile PBS, pH 7.4. 5 % – 8% trehalose is added as protectants before lyophilization.

Storage & Shipping: Store at -20°C to -80°C for 12 months in lyophilized form. After reconstitution, if not intended for use within a month, aliquot and store at -80°C (Avoid repeated freezing and thawing).

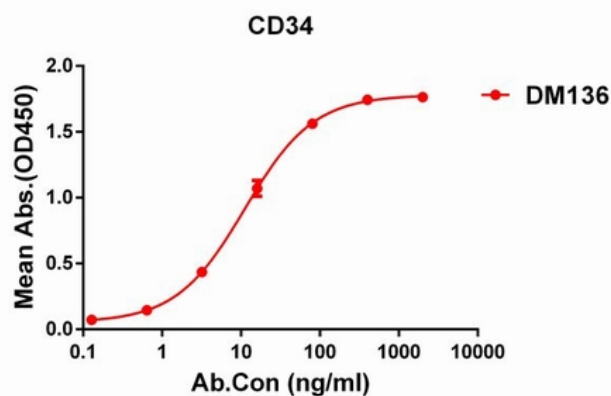


Figure 1. ELISA plate pre-coated by $1\ \mu\text{g/ml}$ ($100\ \mu\text{l/well}$) Human CD34 protein, His tagged protein 11280 can bind Rabbit anti-CD34 monoclonal antibody (clone: DM136) in a linear range of 0.1-12 ng/ml.

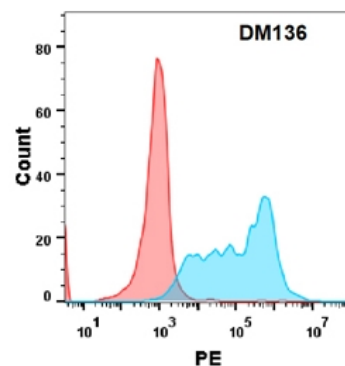


Figure 2. Flow cytometry analysis with Anti-CD34 (DM136) on Expi293 cells transfected with human CD34 (Blue histogram) or Expi293 transfected with irrelevant protein (Red histogram).