

CD40 (DM101) RABBIT MAB

Cat.#: 28444

Product Name: Anti-CD40(DM101) Rabbit Monoclonal Antibody

Synonyms: CD40; Bp50; CDW40; MGC9013; TNFRSF5; p50

Description: Anti-CD40 antibody(DM101) Rabbit Monoclonal Antibody

Background: This gene is a member of the TNF-receptor superfamily. The encoded protein is a receptor on antigen-presenting cells of the immune system and is essential for mediating a broad variety of immune and inflammatory responses including T cell-dependent immunoglobulin class switching; memory B cell development; and germinal center formation. AT-hook transcription factor AKNA is reported to coordinately regulate the expression of this receptor and its ligand; which may be important for homotypic cell interactions. Adaptor protein TNFR2 interacts with this receptor and serves as a mediator of the signal transduction. The interaction of this receptor and its ligand is found to be necessary for amyloid-beta-induced microglial activation; and thus is thought to be an early event in Alzheimer disease pathogenesis. Mutations affecting this gene are the cause of autosomal recessive hyper-IgM immunodeficiency type 3 (HIGM3). Multiple alternatively spliced transcript variants of this gene encoding distinct isoforms have been reported.

Applications: ELISA; Flow Cyt

Recommended Dilutions: ELISA 1:5000-10000; Flow Cyt 1:100

Host Species: Rabbit

Isotype: Rabbit IgG

Purification: Purified from cell culture supernatant by affinity chromatography

Species Reactivity: Human CD40

Constituents: Lyophilized from sterile PBS, pH 7.4. 5% – 8% trehalose is added as protectants before lyophilization.

Storage & Shipping: Store at -20°C to -80°C for 12 months in lyophilized form. After reconstitution, if not intended for use within a month, aliquot and store at -80°C (Avoid repeated freezing and thawing).

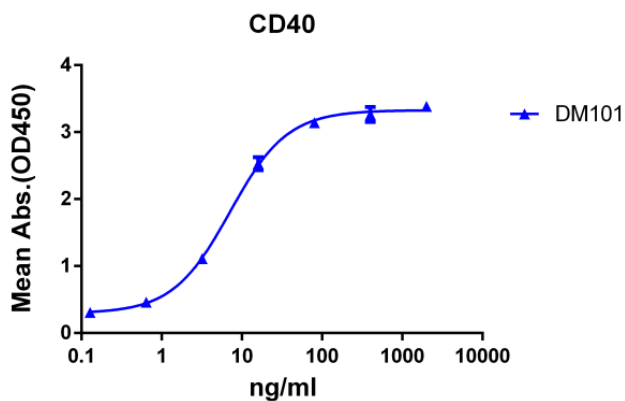


Figure 1. ELISA plate pre-coated by 2 µg/ml (100 µl/well) Human CD40 protein, mFc-His tagged protein 11143 can bind Rabbit anti-CD40 monoclonal antibody (clone: DM101) in a linear range of 0.64-80 ng/ml.

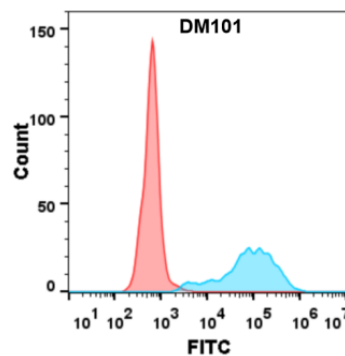


Figure 2. A. Flow cytometry analysis with Anti-CD40 (DM101) on Expi293 cells transfected with human CD40 (Blue histogram) or Expi293 transfected with irrelevant protein (Red histogram).