

**CD43 (DM211) RABBIT MAB****Cat.#:** 28554**Product Name:** Anti-CD43(DM211) Rabbit Monoclonal Antibody**Synonyms:** CD43; GALGP; GPLI15; LSN**Description:** Anti-CD43 antibody(DM211) Rabbit Monoclonal Antibody

**Background:** This gene encodes a highly sialylated glycoprotein that functions in antigen-specific activation of T cells; and is found on the surface of thymocytes; T lymphocytes; monocytes; granulocytes; and some B lymphocytes. It contains a mucin-like extracellular domain; a transmembrane region and a carboxy-terminal intracellular region. The extracellular domain has a high proportion of serine and threonine residues; allowing extensive O-glycosylation; and has one potential N-glycosylation site; while the carboxy-terminal region has potential phosphorylation sites that may mediate transduction of activation signals. Different glycoforms of this protein have been described. In stimulated immune cells; proteolytic cleavage of the extracellular domain occurs in some cell types; releasing a soluble extracellular fragment. Defects in expression of this gene are associated with Wiskott-Aldrich syndrome. [provided by RefSeq; Sep 2017]

**Applications:** ELISA; Flow Cyt**Recommended Dilutions:** ELISA 1:5000-10000; Flow Cyt 1:100**Host Species:** Rabbit**Isotype:** Rabbit IgG**Purification:** Purified from cell culture supernatant by affinity chromatography**Species Reactivity:** Human CD43**Constituents:** Lyophilized from sterile PBS, pH 7.4. 5 % – 8% trehalose is added as protectants before lyophilization.

**Storage & Shipping:** Store at -20°C to -80°C for 12 months in lyophilized form. After reconstitution, if not intended for use within a month, aliquot and store at -80°C (Avoid repeated freezing and thawing).

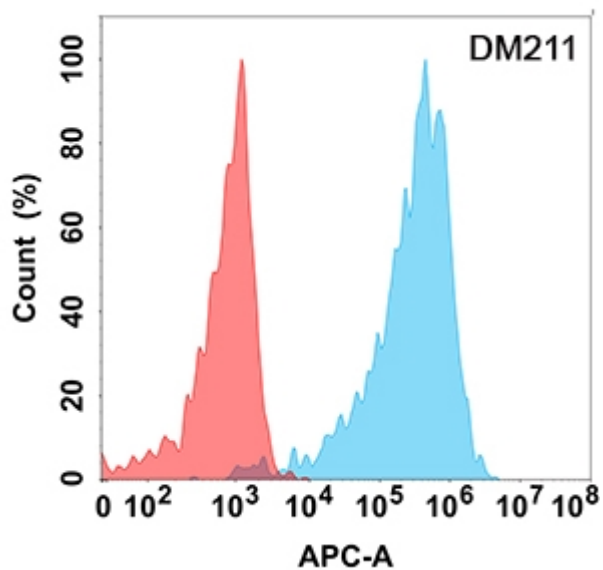


Figure 1. Flow cytometry analysis with Anti-CD43 (DM211) on Expi293 cells transfected with human CD43 (Blue histogram) or Expi293 transfected with irrelevant protein (Red histogram).