

## CD44 (DMC269) IGG1 CHIMERIC MAB

**Cat.#:** 28177

**Product Name:** Anti-CD44(DMC269) IgG1 Chimeric Monoclonal Antibody

**Synonyms:** CD44;CDW44;CSPG8;ECMR-III;HCELL;HUTCH-I;IN;LHR;MC56;MDU2;MDU3;MIC4;Pgpl;Epican

**Description:** Anti-CD44 antibody(DMC269) IgG1 Chimeric Monoclonal Antibody

**Background:** The protein encoded by this gene is a cell-surface glycoprotein involved in cell-cell interactions; cell adhesion and migration. It is a receptor for hyaluronic acid (HA) and can also interact with other ligands; such as osteopontin; collagens; and matrix metalloproteinases (MMPs). This protein participates in a wide variety of cellular functions including lymphocyte activation; recirculation and homing; hematopoiesis; and tumor metastasis. Transcripts for this gene undergo complex alternative splicing that results in many functionally distinct isoforms; however; the full length nature of some of these variants has not been determined. Alternative splicing is the basis for the structural and functional diversity of this protein; and may be related to tumor metastasis.

**Applications:** Flow Cyt

**Recommended Dilutions:** Flow Cyt 1:100

**Host Species:** Rabbit

**Isotype:** Rabbit:Human Fc chimeric IgG1

**Purification:** Purified from cell culture supernatant by affinity chromatography

**Species Reactivity:** Human CD44

**Constituents:** Lyophilized from sterile PBS, pH 7.4. 5 % – 8% trehalose is added as protectants before lyophilization.

**Storage & Shipping:** Store at -20°C to -80°C for 12 months in lyophilized form. After reconstitution, if not intended for use within a month, aliquot and store at -80°C (Avoid repeated freezing and thawing).

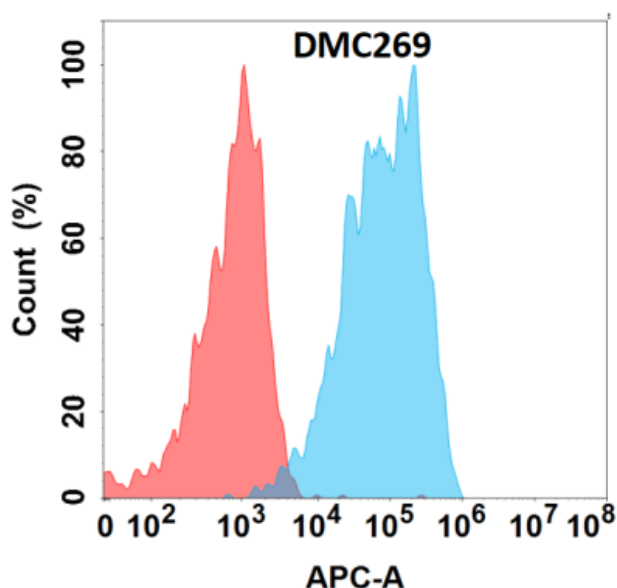


Figure 1. Flow cytometry analysis with Anti-CD44 (DMC269) on Expi293 cells transfected with human CD44 (Blue histogram) or Expi293 transfected with irrelevant protein (Red histogram).