

CD62L (DMC439) IGG1 CHIMERIC MAB

Cat.#: 28227

Product Name: Anti-CD62L(DMC439) IgG1 Chimeric Monoclonal Antibody

Synonyms: CD62L; LAM1; LECAM1; LEU8; LNHR; LSEL; LYAM1; PLNHR; TQ1

Description: Anti-CD62L antibody(DMC439) IgG1 Chimeric Monoclonal Antibody

Background: This gene encodes a cell surface adhesion molecule that belongs to a family of adhesion:homologous receptors. The encoded protein contains a C-type lectin-like domain; a calcium-binding epidermal growth factor-like domain; and two short complement-like repeats. The gene product is required for binding and subsequent rolling of leucocytes on endothelial cells; facilitating their migration into secondary lymphoid organs and inflammation sites. Single-nucleotide polymorphisms in this gene have been associated with various diseases including immunoglobulin A nephropathy. Alternatively spliced transcript variants have been found for this gene.

Applications: Flow Cyt

Recommended Dilutions: Flow Cyt 1:100

Host Species: Rabbit

Isotype: Rabbit:Human Fc chimeric IgG1

Purification: Purified from cell culture supernatant by affinity chromatography

Species Reactivity: Human CD62L

Constituents: Lyophilized from sterile PBS, pH 7.4. 5 % – 8% trehalose is added as protectants before lyophilization.

Storage & Shipping: Store at -20°C to -80°C for 12 months in lyophilized form. After reconstitution, if not intended for use within a month, aliquot and store at -80°C (Avoid repeated freezing and thawing).

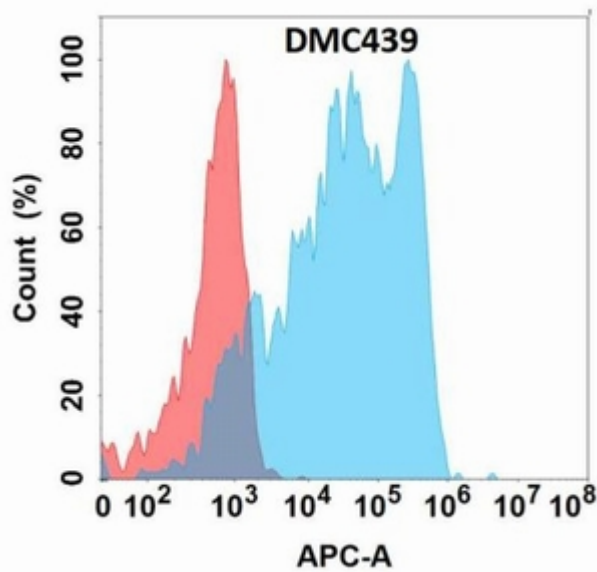


Figure 1. Flow cytometry analysis with Anti-CD62L (DMC439) on Expi293 cells transfected with human CD62L (Blue histogram) or Expi293 transfected with irrelevant protein (Red histogram).