

## CD7 (DM117) RABBIT MAB

**Cat.#:** 28462

**Product Name:** Anti-CD7(DM117) Rabbit Monoclonal Antibody

**Synonyms:** CD7;GP40;TP41;LEU-9;Tp40

**Description:** Anti-CD7 antibody(DM117) Rabbit Monoclonal Antibody

**Background:** This gene encodes a transmembrane protein which is a member of the immunoglobulin superfamily. This protein is found on thymocytes and mature T cells. It plays an essential role in T-cell interactions and also in T-cell:B-cell interaction during early lymphoid development.

**Applications:** ELISA; Flow Cyt

**Recommended Dilutions:** ELISA 1:5000-10000; Flow Cyt 1:100

**Host Species:** Rabbit

**Isotype:** Rabbit IgG

**Purification:** Purified from cell culture supernatant by affinity chromatography

**Species Reactivity:** Human CD7

**Constituents:** Lyophilized from sterile PBS, pH 7.4. 5 % – 8 % trehalose is added as protectants before lyophilization.

**Storage & Shipping:** Store at -20°C to -80°C for 12 months in lyophilized form. After reconstitution, if not intended for use within a month, aliquot and store at -80°C (Avoid repeated freezing and thawing).

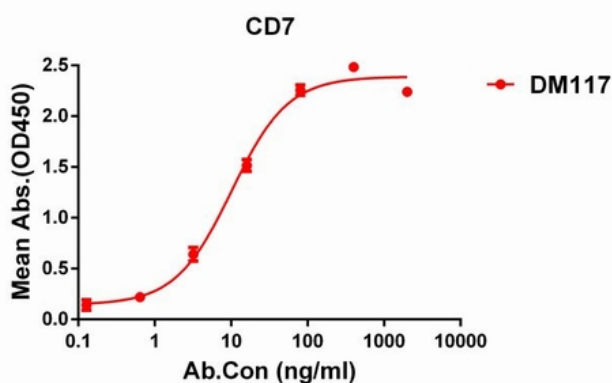


Figure 1. ELISA plate pre-coated by 1 µg/ml (100 µl/well) Human CD7 protein, mFc-His tagged protein 11276 can bind Rabbit anti-CD7 monoclonal antibody (clone: DM117) in a linear range of 0.2-60 ng/ml.

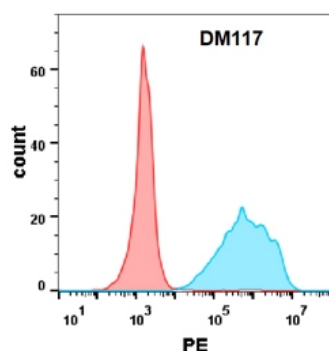


Figure 2. Flow cytometry analysis with Anti-CD7 (DM117) on Expi293 cells transfected with human CD7 (Blue histogram) or Expi293 transfected with irrelevant protein (Red histogram).