

CD96 (DMC285) IGG1 CHIMERIC MAB

Cat.#: 28193

Product Name: Anti-CD96(DMC285) IgG1 Chimeric Monoclonal Antibody

Synonyms: TACTILE

Description: Anti-CD96 antibody(DMC285) IgG1 Chimeric Monoclonal Antibody

Background: The protein encoded by this gene belongs to the immunoglobulin superfamily. It is a type I membrane protein. The protein may play a role in the adhesive interactions of activated T and NK cells during the late phase of the immune response. It may also function in antigen presentation. Alternative splicing generates multiple transcript variants encoding distinct isoforms.

Applications: Flow Cyt

Recommended Dilutions: Flow Cyt 1:100

Host Species: Rabbit

Isotype: Rabbit:Human Fc chimeric IgG1

Purification: Purified from cell culture supernatant by affinity chromatography

Species Reactivity: Human CD96

Constituents: Lyophilized from sterile PBS, pH 7.4. 5 % – 8% trehalose is added as protectants before lyophilization.

Storage & Shipping: Store at -20°C to -80°C for 12 months in lyophilized form. After reconstitution, if not intended for use within a month, aliquot and store at -80°C (Avoid repeated freezing and thawing).

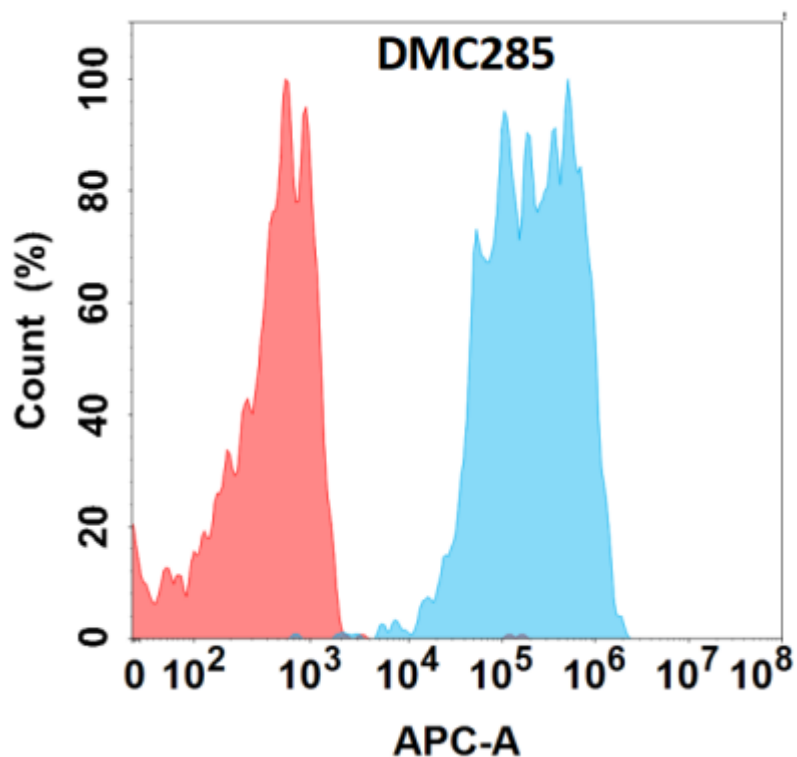


Figure 1. Flow cytometry analysis with Anti-CD96 (DMC285) on Expi293 cells transfected with human CD96 (Blue histogram) or Expi293 transfected with irrelevant protein (Red histogram).