

**CDC42 MAB****Cdc42 Monoclonal Antibody****Cat. #:** 26008**Gene Symbol:** Cdc42**Description:** Anti-Cdc42 Mouse Monoclonal Antibody

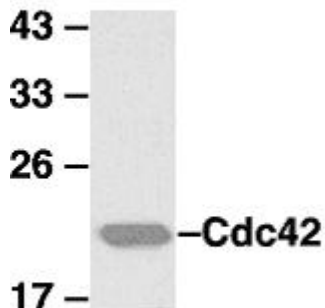
**Background:** Small GTPases are a super-family of cellular signaling regulators. Cdc42 belongs to the Rho sub-family of GTPases that regulate cell motility, cell division, and gene transcription. GTP binding increases the activity of Cdc42, and the hydrolysis of GTP to GDP renders it inactive. GTP hydrolysis is aided by GTPase activating proteins (GAPs), while exchange of GDP for GTP is facilitated by guanine nucleotide exchange factors (GEFs).

**Immunogen:** Recombinant full length protein of Cdc42**Applications:** ELISA, WB, IHC**Recommended Dilutions:** ELISA 1:100–1:5000, WB 1:100–1:2000**Concentration:** 1 mg/ml**Host Species:** Mouse**Format:** Liquid**Clonality:** Monoclonal**Isotype:** IgG**Purity:** Purified from ascites**Preservative:** No**Constituents:** PBS (without  $Mg^{2+}$  and  $Ca^{2+}$ ), pH 7.4, 150 mM NaCl, 50% glycerol**Species Reactivity:** Cdc42 antibody recognizes Cdc42 from vertebrates.**Storage Conditions:** Store at  $-20^{\circ}C$ . Avoid repeated freezing and thawing

**Western blot:**

**MEF cells**

**kD**



**WB: anti-Cdc42 mAb**

**Western blot analysis of Cdc42 proteins.**

MEF whole-cell lysate was used for western blot with the monoclonal anti-Cdc42 antibody (cat. # 26008).