

CDC42 PAB

Cdc42 Polyclonal Antibody

Cat. #: 21010

Gene Symbol: CDC42

Description: Anti-Cdc42 Rabbit Polyclonal Antibody

Background: Small GTPases are a super-family of cellular signaling regulators. Cdc42 belongs to the Rho sub-family of GTPases that regulate cell motility, cell division, and gene transcription. GTP binding increases the activity of Cdc42, and the hydrolysis of GTP to GDP renders it inactive. GTP hydrolysis is aided by GTPase activating proteins (GAPs), while exchange of GDP for GTP is facilitated by guanine nucleotide exchange factors (GEFs).

Immunogen: A synthetic peptide from a unique region of Cdc42

Applications: ELISA, WB, IHC

Recommended Dilutions:

ELISA: 1:100–1:5000

WB: 1:100–1:2000

IHC: 1:50–100

Concentration: 0.2 mg/ml

Host Species: Rabbit

Format: Liquid

Clonality: Polyclonal

Isotype: IgG

Purity: Purified from serum

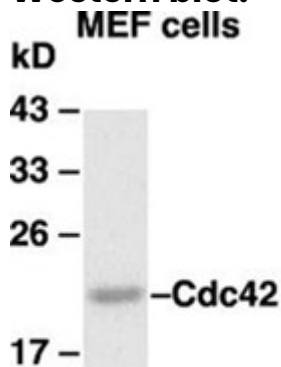
Preservative: No

Constituents: PBS (without Mg^{2+} and Ca^{2+}), pH 7.4, 150 mM NaCl, 50% glycerol

Species Reactivity: Cdc42 antibody recognizes Cdc42 from vertebrates.

Storage Conditions: Store at $-20^{\circ}C$. Avoid repeated freezing and thawing

Western blot:



WB: anti-Cdc42 pAb

Western blot analysis of Cdc42 proteins.

MEF whole-cell lysate was used for western blot with the polyclonal Anti-Cdc42 antibody (cat. #21010).