

CDH1 (DMC484) IGG1 CHIMERIC MAB

Cat.#: 28260

Product Name: Anti-CDH1(DMC484) IgG1 Chimeric Monoclonal Antibody

Synonyms: Arc-1; BCDS1; CD324; CDHE; ECAD; LCAM; UVO

Description: Anti-CDH1 antibody(DMC484) IgG1 Chimeric Monoclonal Antibody

Background: This gene encodes a classical cadherin of the cadherin superfamily. Alternative splicing results in multiple transcript variants; at least one of which encodes a preproprotein that is proteolytically processed to generate the mature glycoprotein. This calcium-dependent cell-cell adhesion protein is comprised of five extracellular cadherin repeats; a transmembrane region and a highly conserved cytoplasmic tail. Mutations in this gene are correlated with gastric; breast; colorectal; thyroid and ovarian cancer. Loss of function of this gene is thought to contribute to cancer progression by increasing proliferation; invasion; and/or metastasis. The ectodomain of this protein mediates bacterial adhesion to mammalian cells and the cytoplasmic domain is required for internalization. This gene is present in a gene cluster with other members of the cadherin family on chromosome 16. [provided by RefSeq; Nov 2015]

Applications: Flow Cyt

Recommended Dilutions: Flow Cyt 1:100

Host Species: Rabbit

Isotype: Rabbit:Human Fc chimeric IgG1

Purification: Purified from cell culture supernatant by affinity chromatography

Species Reactivity: Human CDH1

Constituents: Lyophilized from sterile PBS, pH 7.4. 5 % – 8% trehalose is added as protectants before lyophilization.

Storage & Shipping: Store at -20°C to -80°C for 12 months in lyophilized form. After reconstitution, if not intended for use within a month, aliquot and store at -80°C (Avoid repeated freezing and thawing).

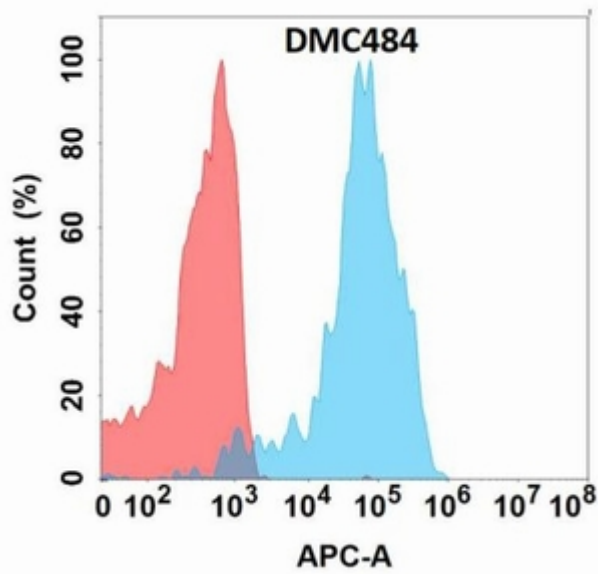


Figure 1. Flow cytometry analysis with Anti-CDH1 (DMC484) on Expi293 cells transfected with human CDH1 (Blue histogram) or Expi293 transfected with irrelevant protein (Red histogram).