

## CDH17 (DMC485) IGG1 CHIMERIC MAB

**Cat.#:** 28261

**Product Name:** Anti-CDH17(DMC485) IgG1 Chimeric Monoclonal Antibody

**Synonyms:** CDH16; HPT-1; HPT1

**Description:** Anti-CDH17 antibody(DMC485) IgG1 Chimeric Monoclonal Antibody

**Background:** This gene is a member of the cadherin superfamily; genes encoding calcium-dependent; membrane-associated glycoproteins. The encoded protein is cadherin-like; consisting of an extracellular region; containing 7 cadherin domains; and a transmembrane region but lacking the conserved cytoplasmic domain. The protein is a component of the gastrointestinal tract and pancreatic ducts; acting as an intestinal proton-dependent peptide transporter in the first step in oral absorption of many medically important peptide-based drugs. The protein may also play a role in the morphological organization of liver and intestine. Alternative splicing results in multiple transcript variants. [provided by RefSeq; Jan 2009]

**Applications:** Flow Cyt

**Recommended Dilutions:** Flow Cyt 1:100

**Host Species:** Rabbit

**Isotype:** Rabbit:Human Fc chimeric IgG1

**Purification:** Purified from cell culture supernatant by affinity chromatography

**Species Reactivity:** Human CDH17

**Constituents:** Lyophilized from sterile PBS, pH 7.4. 5 % – 8% trehalose is added as protectants before lyophilization.

**Storage & Shipping:** Store at -20°C to -80°C for 12 months in lyophilized form. After reconstitution, if not intended for use within a month, aliquot and store at -80°C (Avoid repeated freezing and thawing).

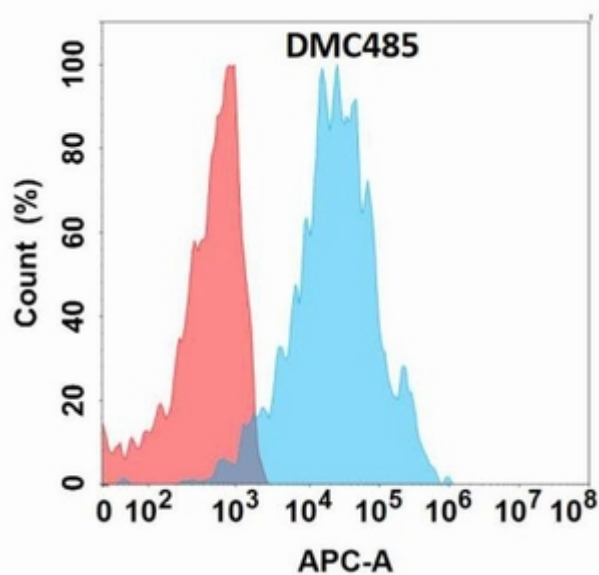


Figure 1. Flow cytometry analysis with Anti-CDH17 (DMC485) on Expi293 cells transfected with human CDH17 (Blue histogram) or Expi293 transfected with irrelevant protein (Red histogram).