

## CDH6 (DMC6765) IGG1 CHIMERIC MAB

**Cat.#:** 28276

**Product Name:** Anti-CDH6(DMC6765) IgG1 Chimeric Monoclonal Antibody

**Synonyms:** CDH6; K-cadherin

**Description:** Anti-CDH6 antibody(DMC6765) IgG1 Chimeric Monoclonal Antibody

**Background:** This gene encodes a member of the cadherin superfamily. Cadherins are membrane glycoproteins that mediate homophilic cell-cell adhesion and play critical roles in cell differentiation and morphogenesis. The encoded protein is a type II cadherin and may play a role in kidney development as well as endometrium and placenta formation. Decreased expression of this gene may be associated with tumor growth and metastasis. [provided by RefSeq; May 2011]

**Applications:** Flow Cyt

**Recommended Dilutions:** Flow Cyt 1:100

**Host Species:** Rabbit

**Isotype:** Rabbit:Human Fc chimeric IgG1

**Purification:** Purified from cell culture supernatant by affinity chromatography

**Species Reactivity:** Human CDH6

**Constituents:** Lyophilized from sterile PBS, pH 7.4. 5 % – 8% trehalose is added as protectants before lyophilization.

**Storage & Shipping:** Store at -20°C to -80°C for 12 months in lyophilized form. After reconstitution, if not intended for use within a month, aliquot and store at -80°C (Avoid repeated freezing and thawing).

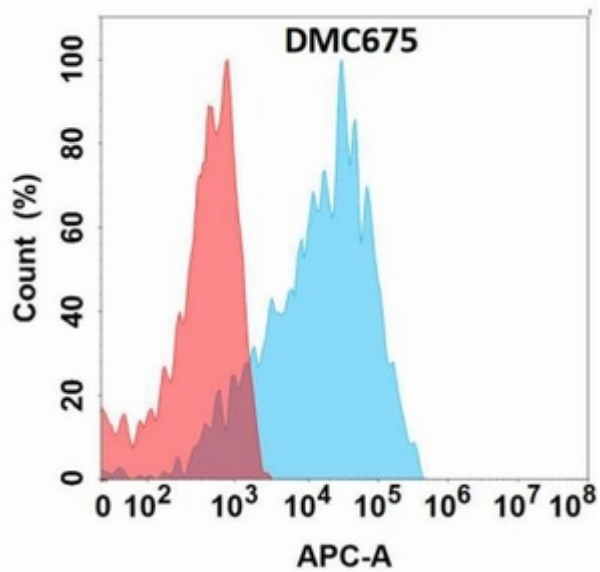


Figure 1. Flow cytometry analysis with Anti-CDH6(DMC675) on Expi293 cells transfected with human CDH6(Blue histogram) or Expi293 transfected with irrelevant protein (Red histogram).