

CFB (DMC366) IGG1 CHIMERIC MAB**Cat.#:** 28199**Product Name:** Anti-CFB(DMC366) IgG1 Chimeric Monoclonal Antibody**Synonyms:** AHUS4; ARMD14; BF; BFD; CFAB; CFBD; FB; FBI12; GBG; H2-Bf; PBF2**Description:** Anti-CFB antibody(DMC366) IgG1 Chimeric Monoclonal Antibody

Background: This gene encodes complement factor B; a component of the alternative pathway of complement activation. Factor B circulates in the blood as a single chain polypeptide. Upon activation of the alternative pathway; it is cleaved by complement factor D yielding the noncatalytic chain Ba and the catalytic subunit Bb. The active subunit Bb is a serine protease which associates with C3b to form the alternative pathway C3 convertase. Bb is involved in the proliferation of preactivated B lymphocytes; while Ba inhibits their proliferation. This gene localizes to the major histocompatibility complex (MHC) class III region on chromosome 6. This cluster includes several genes involved in regulation of the immune reaction. Polymorphisms in this gene are associated with a reduced risk of age-related macular degeneration. The polyadenylation site of this gene is 421 bp from the 5' end of the gene for complement component 2.

Applications: Flow Cyt**Recommended Dilutions:** Flow Cyt 1:100**Host Species:** Rabbit**Isotype:** Rabbit:Human Fc chimeric IgG1**Purification:** Purified from cell culture supernatant by affinity chromatography**Species Reactivity:** Human CFB**Constituents:** Lyophilized from sterile PBS, pH 7.4. 5 % – 8% trehalose is added as protectants before lyophilization.**Storage & Shipping:** Store at -20°C to -80°C for 12 months in lyophilized form. After reconstitution, if not intended for use within a month, aliquot and store at -80°C (Avoid repeated freezing and thawing).

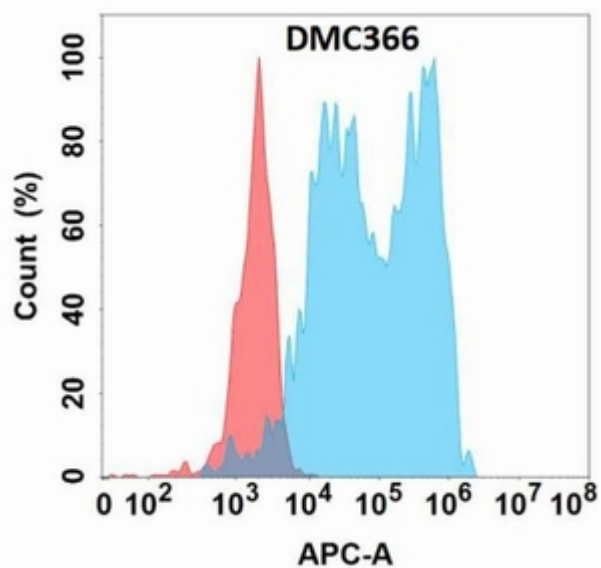


Figure 1. Flow cytometry analysis with Anti-CFB (DMC366) on Expi293 cells transfected with human CFB (Blue histogram) or Expi293 transfected with irrelevant protein (Red histogram).