

CHI3L1 (DMC483) IGG1 CHIMERIC MAB

Cat.#: 28259

Product Name: Anti-CHI3L1(DMC483) IgG1 Chimeric Monoclonal Antibody

Synonyms: ASRT7; CGP-39; GP-39; GP39; HC-gp39; HCGP-3P; hCGP-39; YK-40; YKL-40; YKL40; YYL-40

Description: Anti-CHI3L1 antibody(DMC483) IgG1 Chimeric Monoclonal Antibody

Background: Chitinases catalyze the hydrolysis of chitin; which is an abundant glycopolymer found in insect exoskeletons and fungal cell walls. The glycoside hydrolase 18 family of chitinases includes eight human family members. This gene encodes a glycoprotein member of the glycosyl hydrolase 18 family. The protein lacks chitinase activity and is secreted by activated macrophages; chondrocytes; neutrophils and synovial cells. The protein is thought to play a role in the process of inflammation and tissue remodeling. [provided by RefSeq; Sep 2009]

Applications: Flow Cyt

Recommended Dilutions: Flow Cyt 1:100

Host Species: Rabbit

Isotype: Rabbit:Human Fc chimeric IgG1

Purification: Purified from cell culture supernatant by affinity chromatography

Species Reactivity: Human CHI3L1

Constituents: Lyophilized from sterile PBS, pH 7.4. 5 % – 8% trehalose is added as protectants before lyophilization.

Storage & Shipping: Store at -20°C to -80°C for 12 months in lyophilized form. After reconstitution, if not intended for use within a month, aliquot and store at -80°C (Avoid repeated freezing and thawing).

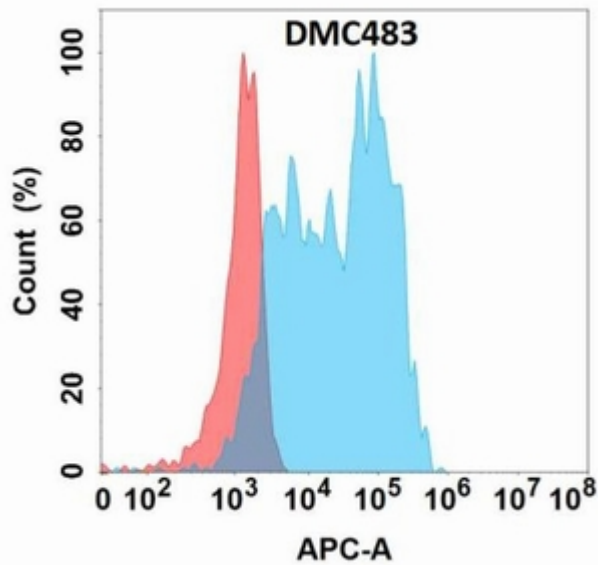


Figure 1. Flow cytometry analysis with Anti-CHI3L1 (DMC483) on Expi293 cells transfected with human CHI3L1 (Blue histogram) or Expi293 transfected with irrelevant protein (Red histogram).