

## CLDN18.2 (DM179) RABBIT MAB

**Cat.#:** 28522

**Product Name:** Anti-CLDN18.2(DM179) Rabbit Monoclonal Antibody

**Synonyms:** Claudin 18.2

**Description:** Anti-CLDN18.2 antibody(DM179) Rabbit Monoclonal Antibody

**Background:** CLDN18 belongs to the large claudin family of proteins; which form tight junction strands in epithelial cells.

**Applications:** ELISA; Flow Cyt

**Recommended Dilutions:** ELISA 1:5000-10000; Flow Cyt 1:100

**Host Species:** Rabbit

**Isotype:** Rabbit IgG

**Purification:** Purified from cell culture supernatant by affinity chromatography

**Species Reactivity:** Human CLDN18.2

**Constituents:** Lyophilized from sterile PBS, pH 7.4. 5 % – 8% trehalose is added as protectants before lyophilization.

**Storage & Shipping:** Store at -20°C to -80°C for 12 months in lyophilized form. After reconstitution, if not intended for use within a month, aliquot and store at -80°C (Avoid repeated freezing and thawing).

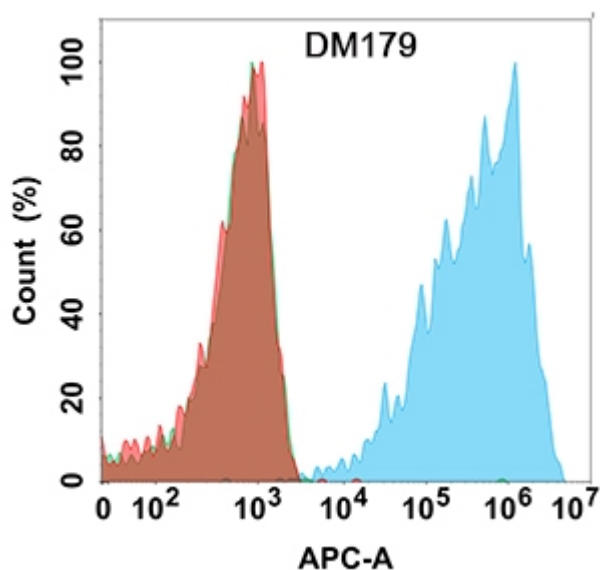


Figure 1. Flow cytometry analysis with Anti-CLDN18.2 (DM179) on Expi293 cells transfected with human CLDN18.2 (Blue histogram) or Expi293 transfected with human CLDN18.1 (Green histogram) or Expi293 transfected with irrelevant protein (Red histogram).



# Product Description

Pioneering GTPase and Oncogene Product Development since 2010

---