

HUMAN CLDN2 FULL LENGTH PROTEIN

Cat.#: 11063

Product Name: Human CLDN2 Full Length Protein

Size: 10 µg, 50 µg and 100 µg

Synonyms: OAZON

Target: CLDN2

UNIPROT ID: P57739

Description: Human CLDN2 full length protein-synthetic nanodisc

Background: This protein belongs to the claudin protein family whose members have been identified as major integral membrane proteins localized exclusively at tight junctions. Claudins are expressed in an organ-specific manner and regulate tissue-specific physiologic properties of tight junctions. This protein is expressed in the intestine. Alternatively spliced transcript variants with different 5' untranslated region have been found for this gene.

Species/Host: HEK293

Molecular Weight: The human full length CLDN2 protein has a MW of 24.5 kDa

Formulation & Reconstitution: Lyophilized from nanodisc solubilization buffer (20 mM Tris-HCl, 150 mM NaCl, pH 8.0). Normally 5% – 8% trehalose is added as protectants before lyophilization.

Storage & Shipping: Store at -20°C to -80°C for 12 months in lyophilized form. After reconstitution, if not intended for use within a month, aliquot and store at -80°C (Avoid repeated freezing and thawing). Lyophilized proteins are shipped at ambient temperature.

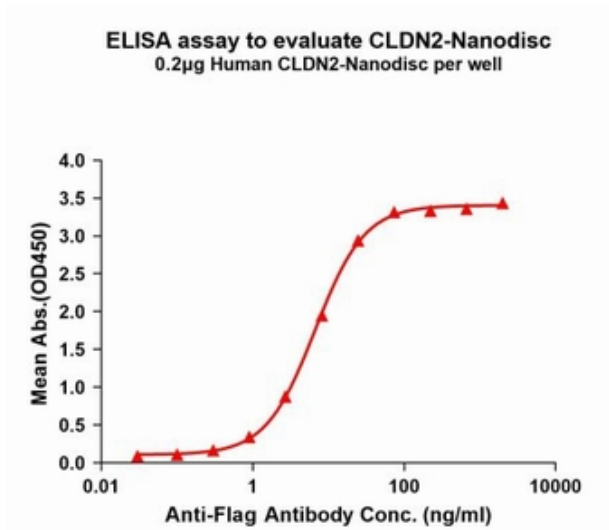


Figure1. Elisa plates were pre-coated with Flag Tag CLDN2-Nanodisc (0.2 µg/per well). Serial diluted anti-Flag monoclonal antibody solutions were added, washed, and incubated with secondary antibody before Elisa reading. From above data, the EC₅₀ for anti-Flag monoclonal antibody binding with CLDN2-Nanodisc is 6.681ng/ml.

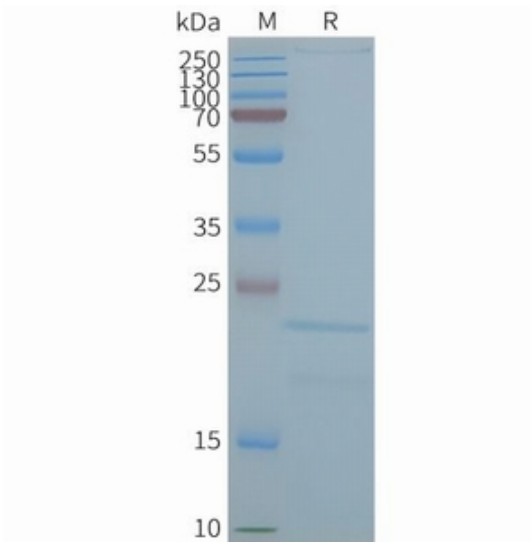


Figure2. Human CLDN2-Nanodisc, Flag Tag on SDS-PAGE