

HUMAN CLDN4 FULL LENGTH PROTEIN**Cat.#:** 11064**Product Name:** Human CLDN4 Full Length Protein**Size :** 10 µg, 50 µg and 100 µg**Synonyms:** CPE-R; CPER; CPETR; CPETRI; hCPE-R; WBSCR8**Target:** CLDN4**UNIPROT ID:** O14493**Description:** Human CLDN4 full length protein-synthetic nanodisc

Background: The protein belongs to the claudin family. Claudins are integral membrane proteins that are components of the epithelial cell tight junctions, which regulate movement of solutes and ions through the paracellular space. This protein is a high-affinity receptor for Clostridium perfringens enterotoxin (CPE) and may play a role in internal organ development and function during pre- and postnatal life. This gene is deleted in Williams-Beuren syndrome, a neurodevelopmental disorder affecting multiple systems.

Species/Host: HEK293**Molecular Weight:** The human full length CLDN4 protein has a MW of 22.1 kDa

Formulation & Reconstitution: Lyophilized from nanodisc solubilization buffer (20 mM Tris-HCl, 150 mM NaCl, pH 8.0). Normally 5% – 8% trehalose is added as protectants before lyophilization.

Storage & Shipping: Store at -20°C to -80°C for 12 months in lyophilized form. After reconstitution, if not intended for use within a month, aliquot and store at -80°C (Avoid repeated freezing and thawing). Lyophilized proteins are shipped at ambient temperature.

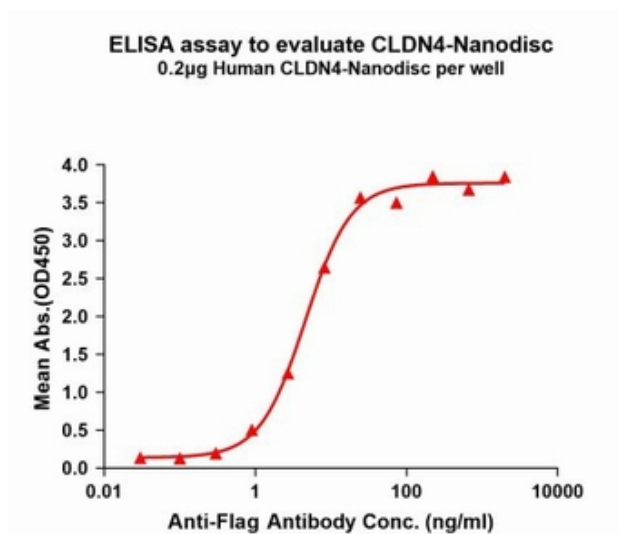


Figure1. Elisa plates were pre-coated with Flag Tag CLDN4-Nanodisc (0.2 µg/per well). Serial diluted anti-Flag monoclonal antibody solutions were added, washed, and incubated with secondary antibody before Elisa reading. From above data, the EC50 for anti-Flag monoclonal antibody binding with CLDN4-Nanodisc is 4.607ng/ml.

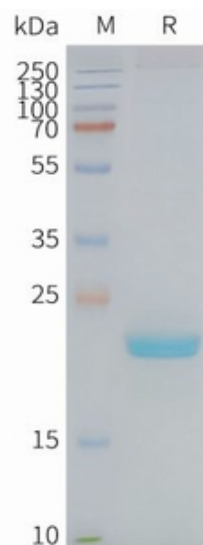


Figure2. Human CLDN4-Nanodisc, Flag Tag on SDS-PAGE