

## CLEC1A (DMC468) IGG1 CHIMERIC MAB

**Cat.#:** 28244

**Product Name:** Anti-CLEC1A(DMC468) IgG1 Chimeric Monoclonal Antibody

**Synonyms:** CLEC-1; CLEC1

**Description:** Anti-CLEC1A antibody(DMC468) IgG1 Chimeric Monoclonal Antibody

**Background:** This gene encodes a member of the C-type lectin:C-type lectin-like domain (CTL:CTLD) superfamily. Members of this family share a common protein fold and have diverse functions; such as cell adhesion; cell-cell signaling; glycoprotein turnover; and roles in inflammation and immune response. The encoded protein may play a role in regulating dendritic cell function. This gene is closely linked to other CTL:CTLD superfamily members on chromosome 12p13 in the natural killer gene complex region. Alternative splicing results in multiple transcript variants. [provided by RefSeq; Jul 2014]

**Applications:** Flow Cyt

**Recommended Dilutions:** Flow Cyt 1:100

**Host Species:** Rabbit

**Isotype:** Rabbit:Human Fc chimeric IgG1

**Purification:** Purified from cell culture supernatant by affinity chromatography

**Species Reactivity:** Human CLEC1A

**Constituents:** Lyophilized from sterile PBS, pH 7.4. 5 % – 8% trehalose is added as protectants before lyophilization.

**Storage & Shipping:** Store at -20°C to -80°C for 12 months in lyophilized form. After reconstitution, if not intended for use within a month, aliquot and store at -80°C (Avoid repeated freezing and thawing).

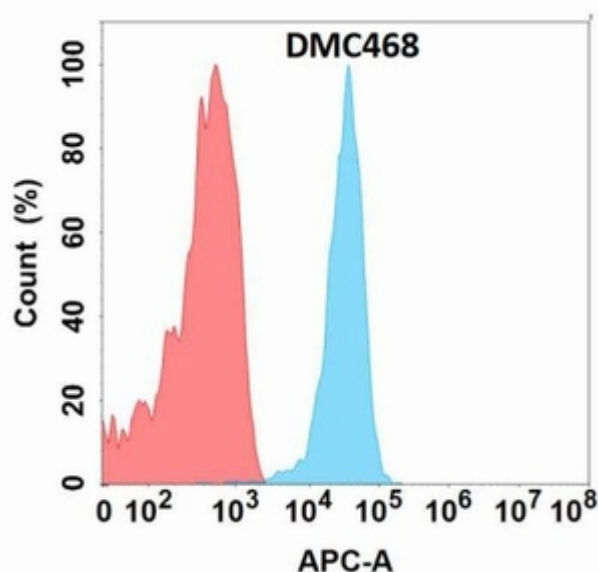


Figure 1. Flow cytometry analysis with Anti-CLEC1A (DMC468) on Expi293 cells transfected with human CLEC1A (Blue histogram) or Expi293 transfected with irrelevant protein (Red histogram).