

## CLEC2D (DMC394) IGG1 CHIMERIC MAB

**Cat.#:** 28212

**Product Name:** Anti-CLEC2D(DMC394) IgG1 Chimeric Monoclonal Antibody

**Synonyms:** C-type lectin domain family 2 member D;Lectin-like NK cell receptor;LLT-1;Osteoclast inhibitory lectin

**Description:** Anti-CLEC2D antibody(DMC394) IgG1 Chimeric Monoclonal Antibody

**Background:** This gene encodes a member of the natural killer cell receptor C-type lectin family. The encoded protein inhibits osteoclast formation and contains a transmembrane domain near the N-terminus as well as the C-type lectin-like extracellular domain. Several alternatively spliced transcript variants have been identified for this gene.

**Applications:** Flow Cyt

**Recommended Dilutions:** Flow Cyt 1:100

**Host Species:** Rabbit

**Isotype:** Rabbit:Human Fc chimeric IgG1

**Purification:** Purified from cell culture supernatant by affinity chromatography

**Species Reactivity:** Human CLEC2D

**Constituents:** Lyophilized from sterile PBS, pH 7.4. 5 % – 8% trehalose is added as protectants before lyophilization.

**Storage & Shipping:** Store at -20°C to -80°C for 12 months in lyophilized form. After reconstitution, if not intended for use within a month, aliquot and store at -80°C (Avoid repeated freezing and thawing).

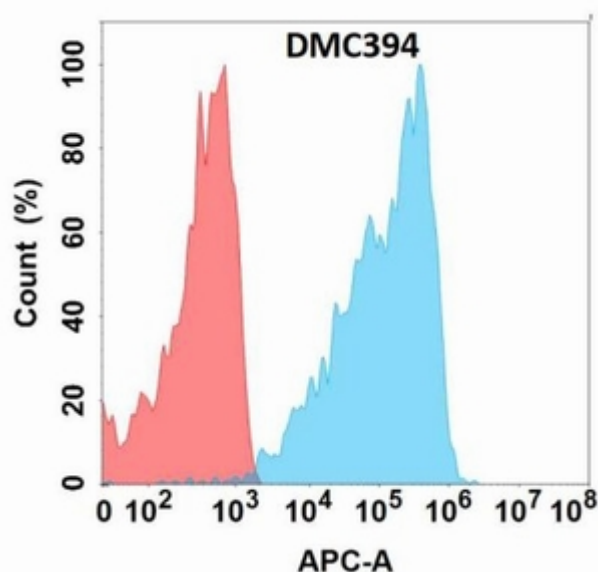


Figure 1. Flow cytometry analysis with Anti-CLEC2D (DMC394) on Expi293 cells transfected with human CLEC2D (Blue histogram) or Expi293 transfected with irrelevant protein (Red histogram).