

CLU (DMC461) IGG1 CHIMERIC MAB

Cat.#: 28237

Product Name: Anti-CLU(DMC461) IgG1 Chimeric Monoclonal Antibody

Synonyms: AAG4; APOJ; CLI; KUBI; MGC24903; SGP-2; SGP2; SP-40; TRPM-2; TRPM2

Description: Anti-CLU antibody(DMC461) IgG1 Chimeric Monoclonal Antibody

Background: The protein encoded by this gene is a secreted chaperone that can under some stress conditions also be found in the cell cytosol. It has been suggested to be involved in several basic biological events such as cell death; tumor progression; and neurodegenerative disorders. Alternate splicing results in both coding and non-coding variants.[provided by RefSeq; May 2011]

Applications: Flow Cyt

Recommended Dilutions: Flow Cyt 1:100

Host Species: Rabbit

Isotype: Rabbit:Human Fc chimeric IgG1

Purification: Purified from cell culture supernatant by affinity chromatography

Species Reactivity: Human CLU

Constituents: Lyophilized from sterile PBS, pH 7.4. 5 % – 8% trehalose is added as protectants before lyophilization.

Storage & Shipping: Store at -20°C to -80°C for 12 months in lyophilized form. After reconstitution, if not intended for use within a month, aliquot and store at -80°C (Avoid repeated freezing and thawing).

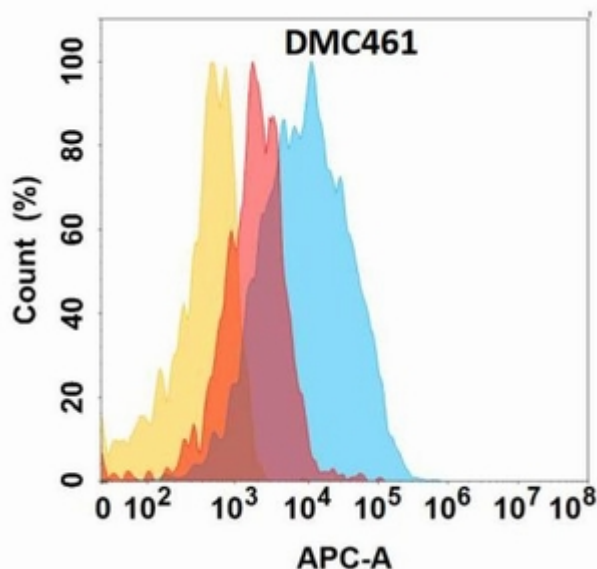


Figure 1. CLU protein is highly expressed on the surface of Expi293 cell membrane. Flow cytometry analysis with Anti-CLU (DMC461) on Expi293 cells transfected with human CLU (Blue histogram) or Expi293 transfected with irrelevant protein (Red histogram), and Isotype antibody on Expi293 transfected with irrelevant protein (Orange histogram).